



Baltimore Sierran

Serving members in Baltimore City, Baltimore County, & Harford County **May 2009**

Sierra Club Mission: Explore, enjoy and protect the planet

Opportunities for Involvement (see inside for more information):

- June 14, 4:00 p.m. – Utah Wilderness slide show and program
- June 25, 6:30 p.m. – GB Sierra Club Outings Planning Meeting
- July 16, 7:30 p.m. – GB Sierra Club Executive Committee Public Meeting
- 2nd Thursday of each month - Young Sierrans Socials
- Saturday after 2nd Thursday of each month – Young Sierrans Outings
- See Outings Schedule in newsletter and on website

Volunteer to:

- If you want to get involved with local environmental action but don't know how to get started, contact Caroli Mullen, GB Membership Chair, at 410-366-6953 or carolimullen@verizon.net.
- Volunteer to get involved with political action at the State or local level. Contact Janet Schollenberger, GB Political Chair, at 443-386-5054 or jscholle4@yahoo.com.
- Be an outings leader. Contact Jack Wise at 410-256-3963
- Share your enthusiasm for the outdoors with Baltimore City youngsters. We need leaders and co-leaders for outings with youth at the three schools with which we partner. Contact Bob Burchard at bobburchard@yahoo.com. Check out the Baltimore Inner City Outings at www.ico.sierraclub.org/Baltimore

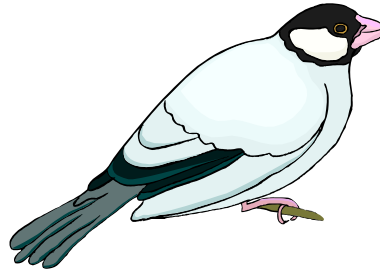
SPARROWS POINT ACTION UPDATE CLASS ACTION NUISANCE LAWSUIT SIGNUP WEBSITE ONLINE

By Ron Henry, Chapter Chair

During recent months, the focus on Sparrows Point issues concerning the proposed liquid natural gas (LNG) plant site and related issues has changed. With the change in administration from the Bush years and the arrival of the Obama administration, a refocusing was indicated. The severe economic downturn, that has affected the funds of many large corporations like AES, has worked in our favor in delaying the LNG construction. Legal maneuverings have delayed the process. Also, changes in attitude towards environmental issues are being reflected in administrative policies throughout our various governmental agencies.

The Sparrows Point Action consists of residents from Sparrows Point and its surrounding communities who are concerned about the billions of tons of toxic pollution that have been released into the air, soil, sediment, water, and groundwater since Bethlehem Steel began mass production in 1893.

The community leaders of the Greater Dundalk Alliance and the communities of Turners Station, Greater Dundalk, Edgemere, Fort Howard, Sparrows Point, and northern Anne Arundel County have come together with a team of pro bono lawyers to form a website to expedite plaintiff signups. This newly developed website will greatly enhance outreach to community members to bring a lawsuit. The goal is to request relief for those who have



suffered injuries to their health and interference with the enjoyment of their homes because of the area in which they live.

Government enforcement actions and consent decrees have not been able to stop this pollution. The private nuisance class action suit, which will follow the website signup process, will pursue action against the companies at Sparrows Point that have continued to foul the air, water, and soil. The Sparrows Point area is the number 1 disease cluster in the State of Maryland (asthma, leukemia, cancer, birth defects, miscarriages, developmental disorders) and the 26th worst disease cluster in the United States (reference: Center for Disease Control and Maryland Department of Health and Mental Hygiene).

Moreover, the situation is getting worse, not better. Severstal Steel, which purchased the Sparrows Point steel operation from Mittal Steel in 2008, has indicated that it is seeking a five-fold increase in steel production – that means much more pollution. The pollution in nearby waters has severely impacted both commercial and recreational fisherman, who have complained about the irritating effects of the toxins and bacteria in the water causing rashes, skin lesions, leg sores, and ear aches.

The “kickoff date” for putting the Sparrows Point Action website in action will start with a Greater Sparrows Point Peninsula community

meeting, arranged by the Greater Dundalk Alliance, on May 5. Several local community sites will be chosen, and schedules will be published for community member signups for the lawsuit. For further details, please contact Mr. Russell Donnelly of the Greater Dundalk Alliance at: 2114 Oak Road Sparrows Point, MD 21219 Phone: 410-388-0898; 410-477-3808; Fax: 410-388-0002 E-Mail: irsd7@verizon.net

Outings of the Sierra Club Greater Baltimore Group

May – September 2009

Also, see the outings schedule of the Sierra Club's Howard County Group at: www.maryland.sierraclub.org/bc

MAY

Wed. May 13 GB – Easy. Evening Hike at Cylburn Arboretum (Children and dogs are welcome).

2 mile evening stroll exploring woodland trails and formal gardens around a historical mansion house from the 1880s. Children under 18 must be accompanied by a parent or other responsible adult. Dogs must be friendly and leashed. Meet at 6:30 PM in the parking spaces along the side of the road just before the mansion. The park is in Baltimore City on Greenspring Ave. just off the Jones Falls Expressway between Coldspring Ave. and Northern Parkway. For more information, contact Mary at 410-239-4590 (home), 443-386-0862 (cell), or email at XxDiTz4LyFxX@aol.com.

(Continued on page 14)

**GREATER BALTIMORE GROUP
SIERRA CLUB CONTACTS**

Chris Yoder, GB Group Chair
5701 Rusk Ave.
Baltimore, MD 21215
E-mail: chris.yoder@mdsierra.org
410-466-2462

Greater Baltimore Group: www.maryland.sierraclub.org/baltimore

Young Sierrans website: <http://maryland.sierraclub.org/baltimore/youngsierrans>

Young Sierrans email: youngsierrans@gmail.com

Baltimore Inner City Outings : <http://www.ico.sierraclub.org/baltimore/>

NAME	PHONE/EMAIL	POSITION
Bob Burchard	410-744-05d10 bobburchard@yahoo.com	Inner City Outings Co-Chair Cool Cities – Baltimore County Ex Com Member
Mary C. Corrdry	410-239-4590 443-386-0862 cell XxDiTz4LyFxX@aol.com	Newsletter Co-Editor (copy) Recording Secretary Ex Com Member
Sherry Dowdell	410-852-8901 sierrasherry@comcast.net	Newsletter Co-Editor (design)
Doug Gaede	410-357-0007 sierra@gaede.net	Webmaster
Kathy Harget	410-440-9896 haraget@yahoo.com	Young Sierrans Chair Ex Com Member
Ron Henry	410-838-9119 443-474-7449 RonHenry@msn.com	Chapter Chair Chapter Delegate Ex Com Member
Katja Kjelgaard	410-455-0408 kkjelgaard@verizon.net	Interim Treasurer
Patrick McMahon	410-599-5123 Patrick@mcMahon.com	Transportation Chair Ex Com Member
Caroli Mullen	410-366-6953 carolimullen@verizon.net	Social Justice Chair Membership Chair
Paul Schoen	410-667-4889 pstech@smart.net	Ex Com Member
Janet Schollenberger	443-386-5054 jscholle4@yahoo.com	Political Chair Ex Com Member
Cliff Terry	410-944-9477 Cliff.Terry@maryland.sierraclub.org	Population Chair
Bette Thomson	410-666-2696 bette888@verizon.net	Outings Gatekeeper
Jack Wise	410-256-3963 Hikingjack@Netzero.net	Outings Chair Ex Com Member
Charles (Chris) Yoder	410-466-2462 chris.yoder@mdsierra.org	Group Chair Ex Com Member

*May 2009
From the Chair*

The Statehouse lights are dimmed and the 2009 session of the Maryland Assembly is now history. The planet the people of Maryland will bequeath to our grandchildren won a few victories, achieved some split decisions and, sadly, suffered some defeats. But win, lose, or draw, I take heart in the fact that Sierra Club volunteers were in the fight. This winter and spring we saw Sierrans walking the halls of the Assembly as advocates for the future of our planet. Delegates' and Senators' phones rang when you called; their computer inboxes reflected your e-mails. It made a difference when you responded to a Sierra Club call to action.

Our losses hurt. An environmental defeat is usually permanent. The sprawl inducing Inter-county Connector will almost certainly be built - and the effects of the Assembly's decision to ignore the financial and environmental damage stemming from that boondoggle will be felt for centuries.

In contrast, our victories just keep us in the game until the next inning. As a Sierran, you can take justified pride in your contribution to passage of the Greenhouse Gas Reduction Act. But the primary product of that act will only be a plan to reach our State's greenhouse gas pollution reduction goal by 2020. If approval of the bill was a bottom of the ninth home run to tie the game, the tenth inning will find special interest lobbyists and lawyers working to ensure that the climate protection plan doesn't require actual changes in practices or behavior of their bosses. If we fend them off, and the game remains tied after the tenth inning; the eleventh will come in 2016 when the Assembly must pass an entirely new bill to approve the climate protection plan.

The future ability of the Sierra Club to play a constructive defensive role in fielding the balls hit by the proponents of business as usual and to score runs when advocates for the planet come to bat will depend on decisions you make. Carefully consider whether and how you respond when called upon to support your Sierra Club.

Only in my dreams is the Sierra Club an all powerful Oz sitting behind the curtain and pulling



the levers and pushing the buttons of power. In reality, the Sierra Club is people like you --- giving of their time and resources as advocates for a better future for our State and for our descendants. The Sierra Club is truly a grassroots organization. At every level of the Club--national, State, and local, decisions on Club activity and policy are made by leaders elected by our membership. Here, in Baltimore City and County and Harford County, decisions on Sierra Club activity are made by an Executive Committee, whose members must stand for election. You will find your Group Executive Committee ballot elsewhere in this newsletter. I urge you look at the candidates and vote for those whose vision for your local Sierra Club Group reflects your aspirations. And if you will enclose a note in your ballot sharing your e-mail address, we'll keep you informed of local actions you can take to protect our planet.

Thank you for your membership support and for what you will do in the future for your Sierra Club and for your grandchildren's planet.

Chris Yoder, Chair

In Search of: More Outings and Outings Leaders

Calling all leaders and outdoors enthusiasts. Help enhance the outings offerings for the Greater Baltimore Area with more activities of all types, locations, and difficulty. If you are interesting in sharing your outdoors pursuits and special places with others, find out how to get started. Talk to an outings leader. Attend the quarterly Outings Planning Meeting on **June 25**. (See the Outings Schedule). Participate in an outing. Contact Jack Wise, Outings Chair, at 410-256-3963.

Nominees for the Executive Committee of the Greater Baltimore Sierra Club

The Sierra Club's Greater Baltimore Group has two vacancies for its nine-member Executive Committee (Ex Com), which provides direction and leadership for the Group's diverse activities from fighting global warming, to advocating for legislation and elected officials, to outings. The Ex Com meets quarterly at a public meeting, which is advertised in this newsletter, and communicates regularly by telephone and email.

Members of the Greater Baltimore Group vote for the Ex Com. Following are biographies of members who volunteered to run for election. To vote, email or mail your selections to the Group's Secretary, Mary Corddry, by **July 16**.



Sierra Club on Facebook

In order to better connect with our members and provide more up-to-date and easily accessible information about Sierra Club outings and campaign activities, the Greater Baltimore Group of the Sierra Club now has a Facebook group that you can join. The group will be updated with information about hikes, meetings, and public meetings relevant to the Sierra Club. The Greater Baltimore Group's page can be found at <http://www.facebook.com/group.php?gid=76458501970>.

The Young Sierrans Group also has a Facebook page <http://www.facebook.com/group.php?gid=51601732426> on which they list their social events and outings.

If you're a member of Facebook, please join these groups so that you can get up-to-date information about policy issues and reminders about outings that you're interested in going on.

Ballot for Spring 2009 Elections for Two Vacancies of the Executive Committee of the Sierra Club's Greater Baltimore Group (vote for at most 2)

___ Caroli Mullen

___ Chris Yoder

Send to Mary Corddry at XxDiTz4LyFxX@aol.com or 4512 Willow View St., Hampstead, MD 21074

Caroli Mullen

My name is Caroli Mullen and I live in north central Baltimore City. I recently retired from the federal government and now have the time to be an "agitator". I have worked on both the civil rights and peace issues, but I am most passionate about environmental issues and have decided that will be my focus. I have donated to the Sierra Club for many years and admired the work of the Club, so I decided recently to become an active rather than a passive, member. Since becoming active I have, among other things, worked on the Kratovil campaign on behalf of the Club, attended a legislative training session held by the League of Conservation Voters, and also attended a 3 day Sierra Club Workshop on Dismantling Racism.

Though I am interested in all the issues that the Sierra Club takes on, I would hope to be involved primarily in issues relating to Environmental Justice and to expand the work of the Baltimore-area Club in this area. This, I believe, is important for several reasons. First, in order to build the broadest and largest environmental movement at this critical time, it is necessary to broaden our definition of the "environment." Wilderness is part of the environment, but so are the lead paint and other toxins that permeate poor and minority communities. The Bay is part of the environment, but so is the polluted air that has caused so much of the asthma afflicting Baltimore's children. Second, there is a need to increase the number and diversity of Sierra Club members in Baltimore City. But, in order to accomplish this, we have to campaign on those issues that directly affect Baltimore neighborhoods. If elected to the Baltimore Sierra Club's Executive Committee, I would do my best to develop such campaigns and to increase and broaden the active membership of the Club.

Charles "Chris" Yoder

I have been a member of the Sierra Club for over 30 years. I was first an active member in 1980 when I established a new Group in Idaho and served as its founding chair. A career change compelled a hiatus in my Sierra Club activity, but I am now retired and have moved to Baltimore where I am returning to Sierra Club activism. I was appointed to the Greater Baltimore Group Executive Committee in the summer of 2008 and now serve as Chair. I am also an at-large member of the Maryland Chapter Executive Committee and serve on the Chapter Conservation Committee.

I believe strongly that the Sierra Club's effectiveness lies in the grass roots foundation for our conservation agenda. Our Washington lobbyists and San Francisco lawyers would be indistinguishable from those of any number of other environmental organizations if it were not for the thousands of grassroots Sierrans who embody the Club in our communities.

My goal for the Greater Baltimore Group is to mobilize our local members as a potent force to ensure that the members of our communities, and the public officials who answer to our communities, understand and act on our obligation to provide our descendants with a healthy environment, including the natural values that define a healthy and sustainable ecosystem.

Of course, the Sierra Club's motto calls us to explore and enjoy the planet as well as to protect it. Our Group's social and outings programs are an essential component of our activities.

Utah Wilderness Slide Show and Program

You are invited to a slide show exploring Utah Wilderness on June 14.

Over the course of millions of years, earth, wind, and water worked together to create a unique landscape of brilliantly colored canyons and wildlife habitat in what is now known as southern Utah. These lands, unlike any other in our land, are a legacy entrusted to our generation by the ages; and a resource for which our generation will be held accountable for our stewardship. Until recently the hand of man lay gently on this fragile landscape..... aboriginal peoples leaving only a fragile legacy of cliff dwellings and other archeological treasures, many hidden away and protected by their isolation.

Today however, the tools and resource demands of an industrial society place this irreplaceable resource at risk. Our national addiction for fuel and minerals would replace natural habitat with the noise and destruction of drill pads

and mines; the once pure air and water with pollution, the silence and solitude of nature with the cacophony of unrestrained off-road vehicle "recreation."

You have an opportunity to vicariously explore, through a presentation and slide show, and enjoy this unique resource and to learn what you can do to help ensure protection of these lands for the Americans of tomorrow.

- What: A slide show exploring the wilderness landscapes and canyonlands of Utah.
- Where: The Maryland Presbyterian Church. 1105 Providence Road, Towson MD. About 1/4 mile north of the Baltimore Beltway at the Providence Road exit.
- Presented by: The Greater Baltimore Group of the Sierra Club, in co-operation with the Utah Wilderness Coalition.
- When: 4:00 PM Sunday June 14.
- Questions? Contact Chris Yoder at 410-466-2462 or chris.yoder@mdsierra.org

Baltimore Green Map

By Janet Felsten, Director, Baltimore Green Map

Sierrans, help map Baltimore's opportunities to **Discover. Enjoy. Learn. Take action!** in the great outdoors.

Baltimore Green Map (BGM) uses mapping as a tool to share information and advocate for a greener, more sustainable region. We host an interactive web site that documents the region's natural, cultural and "green living" resources. That includes hiking and biking. We hope that you will add your favorite places to our map.

Part of the international Green Map System®, BGM has taken the lead in using Open Green Map, an interactive Google-based application that uses the Green Map icons to map the world. Open Green Map officially debuts on World Environment Day, June 5. <http://www.opengreenmap.org> The online map is a social media site. You can nominate resources, comment on those already mapped, submit photos, record impacts, and suggest relevant links.

BGM published the Jones Falls Trail Green Map in September 2008, and collaborated with Towson University Professor Jessica Ring and her students to map the Towson area this spring. The products are on exhibit at the Towson Arts Collective through May 30 at 406 York Road, lower level.

This is the first collaboration of the Collegetown Green Map Challenge. We hope to map many more campuses in the next year.

BGM also offers workshops and presentations, and welcomes volunteers in many capacities. Get involved! Help us map the region. Learn more at <http://www.baltogreenmap.org>. Contact Janet Felsten, BGM's Director at info@baltogreenmap.org or 410-235-0838

Comprehensive Zoning in Harford County

By Morita Bruce, Sierra Club member and President-Elect, Friends of Harford

Harford County has begun its Comprehensive Zoning process, where any property owner can ask to change the zoning of his property. A property's zoning determines what can be done with it (residential, business, or industrial use) and under what conditions (number of houses per acre, type of businesses allowed, how much impervious surface is permitted, open space requirements, building setbacks, etc.)

Harford's newly-rewritten zoning code largely ignores smart growth and environmental protection, including protection of Chesapeake Bay Critical Areas. This means rezoning requests

must be very carefully reviewed, with an eye to minimizing sprawl and the environmental damage that results.

Friends of Harford (FOH), Harford County's all-volunteer citizen land use advocates, is analyzing each rezoning request and will provide their recommendations for each property to the County Council. FOH's recommendations will consider Harford's Master Land Use Plan as well as neighborhood compatibility, environmental impacts, traffic impacts, natural features, and other concerns.

The Master Land Use Plan is important because it defines the planned future of specific communities and neighborhoods. It also identifies which areas are targeted for agricultural use or rural residential use, or -- within the designated "development

envelope" -- which areas are supposed to be developed at low, medium, or high density.

FOH's website (www.friendsofharford.com) provides information on Comprehensive Zoning and other land-use topics. FOH will post their rezoning recommendations on this website so residents will have them before the County Council's public hearings on July 16 (6:30 PM, Aberdeen HS), July 21 (6:30 PM, Patterson Mill MS/HS), and July 23 (6:30 PM, North Harford HS). We hope every interested Harford Countian will take the opportunity to voice their opinions on specific properties (3 minutes max) to the County Council at one of these meetings. Your voice can make a difference!



2009 Maryland State Legislative Wrap-Up

by Janet Schollenberger, GB Political Chair

The 2009 legislative session is not marked with many successes for protecting our environment. As history repeats itself, funding for the environment and passing protective regulations are often the first to hit the chopping block in lean economic times. The irony is that the General Assembly has maintained funding for expensive construction projects like the \$3 billion + construction of the ICC in Montgomery County, but, as this article is being written, has drastically chopped Program Open Space funding.

The Senate version of the budget has slashed \$111 million in funding for Program Open Space, which is paramount for land conservation. As this article is being written, environmental political advocates are fighting to have that funding restored as the budget goes through conference committee. Although voters clearly support open space preservation (<http://www.partnersforopenspace.org/updates.htm>), and have been paying for it since 1969 in the form of a 1/2 percent transfer tax whenever they sell a home, history has proven again that the General Assembly representatives have not been listening to their constituents and are not willing to honor the purpose of this transfer tax. The Partner for Open Space organization has smartly noted that loss of funding is also lost opportunity, because the prime time for purchasing land is now when real estate prices are down.

- Since 2002 over \$480 million has been diverted from Program Open Space; park operations have been cut by 46%; and staffing at the Maryland Departments of Environment and Natural Resources are at an all-time low.
- Land development is currently outpacing land preservation, resulting in a loss of environmentally important lands and much needed park and recreation areas.

- Current reports identify a shortfall of \$500 million to address existing needs for our hugely popular local parks and recreation facilities.

Selected environmental bills that were not passed by their respective committees for a full vote in the House and Senate:

SB 384 Program Open Space (POS) – Impervious Surface Prohibition

This bill was sponsored by unlikely partners, Senator Frosh, (a lifetime score of 100%) and Senators Dyson (53%) and Harris (9%) to prohibit POS funds from being used to develop impervious surfaces, defined to include buildings. Unfortunately, this bill never made it out of the Senate Education, Health and Environmental Matters Committee. Furthermore, there was no comparable bill introduced in the House.

H480/SB382 Public Utility Tree Management Act of 2009

BG&E has been relentlessly clearing forested areas within their easements across the state. In response, several legislators, including Delegate Lafferty from Baltimore's District 42, sponsored a bill to require a public utility to prepare a tree management plan to minimize the number of fallen trees and damage to environmentally sensitive areas. The utility would be required to notify the Department of Natural Resources (DNR) at least 30 days prior to cutting vegetation in its easement. DNR would only require re-vegetation of the easements with plants that would not interfere with the power lines, and would not prohibit the utility from cutting trees that posed a hazardous danger. Unfortunately, the Economic Matters Committee issued an unfavorable report. A similar bill failed last year.

HB27/SB753 Defunding the Montgomery Inter-County Connector Highway

This bill was heard in House Appropriations on March 17 and received an unfavorable report from the committee. It was heard in Senate Budget and Taxation on March

18. So, it looks like we Marylanders will be stuck with paying for this mega costly environmentally destructive highway.

Bills that passed the committees and were introduced in the full House and Senate for a vote:

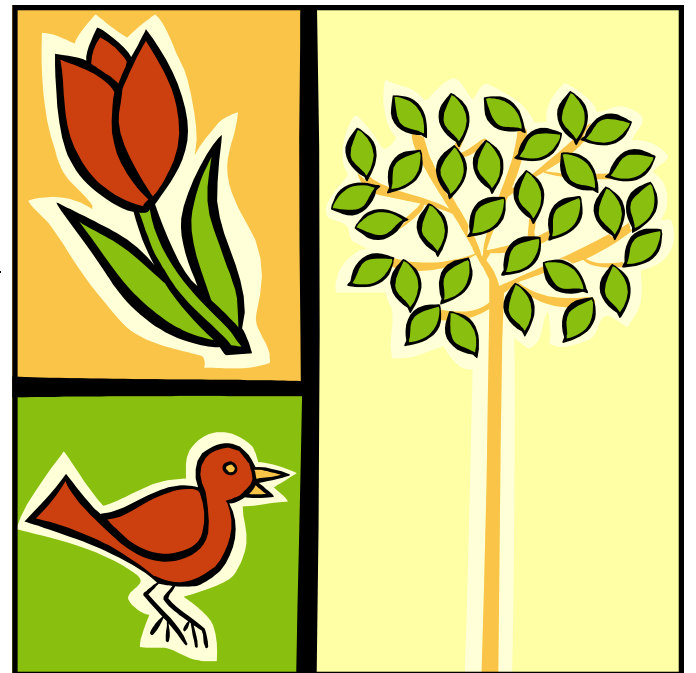
HB 295/SB276 Smart, Green, and Growing Act

The Campaign for Smart and Fair Growth provides for a statewide land use goal according to smart growth measures. Overall, the bill supports new policies that will allow communities to make growth decisions that will protect and enhance community assets. The 1000 Friends of Maryland report that better and more effective design and planning will provide wide ranging benefits to every Marylander - more ways to get around, revitalized communities, homes affordable to more Marylanders, greater protection for our parks and open spaces, and development patterns that help clean-up the Chesapeake and Coastal bays.

Unfortunately, this bill was weakened considerably by the Education, Health, and Environmental Affairs Committee by striking the House's provision that would require counties to concentrate 80% of new development inside designated growth areas--consistent with already existing State smart growth goals. According to 1000 Friends of Maryland, "only four of Maryland's 23 counties are meeting the 80% goal. The provision would have provided flexible measures for counties to comply."

HB1564/SB163 Allow usage of Program Open Space (POS) funds for the construction of indoor and outdoor recreational facilities

The Department of Natural Resources (DNR), which is charged



with cataloging all of the lands purchased or preserved with POS funds, requested emergency legislation to codify the ability of local governments to apply open space funds for the development of land for recreation purposes. Delegate Stein from District 11 sponsored this bill on behalf of DNR. (As of January 7, 2009, the State share had preserved 292,866 acres and the local share had preserved 43,310 acres. Historically, local governments have used POS funding for recreational facilities.) These emergency funds may be used for the construction of in-door and outdoor recreational facilities, including aquatic, golf courses, community, and nature centers.

Although this bill was passed overwhelmingly by the General Assembly, at this point in time the verdict on the environmental impact of this bill is still questionable. More research is warranted and findings will be published in the next newsletter.

HB 1569/SB 1065 Environmental Protection Proceedings

Maryland's Attorney General Doug Gansler spearheaded the passage of the legal right for Maryland citizens to go to court against violators of environmental laws that are designed to protect us from air and water

(Continued on page 6)

2009 Maryland State Legislative Wrap-Up

(Continued from page 5)

pollution and environmental hazards. This right already exists in federal courts and in 44 other states. However, up until its recent passage, Maryland citizens had no recourse to stand up in court against violators of our environmental laws.

HB315/SB278 Greenhouse Gas Emissions Reduction Act of 2009

This bill passed by wide margins in both the House and Senate. Although it has been cited as the hallmark of environmental bills, its success is largely due to the fact that no funding is required to protect the environment, and the entire legislation sunsets in 2016. This new legislation is a very much weakened version of the 2008 bill that required an 80% reduction in CO₂ emissions by 2050 and implementation of measures to achieve this goal. Opposed by businesses, the 2008 bill was re-worked and weakened by an agreement reached by a committee of manufacturers, labor, conservationists, and Maryland state strategists. The 50% reduction in CO₂ emissions goal was replaced with a 25% reduction over 2006 levels by 2020. (According to Environment Maryland, “four policies the state has already taken and nine new policies would reduce global warming pollution in Maryland by 23 percent by 2020.”)

Other features of the newly passed 2009 legislation require the Maryland Department of the Environment (MDE) to publish and update an inventory of statewide greenhouse gas emissions for calendar year 2006, and to establish regulations to achieve the 25% reduction by 2012 without reducing jobs and without adverse impacts on the reliability of energy supplies and affordability of fuel supplies. Despite any successful passage of new regulations in 2012, the entire legislation sunsets in 2016 and needs to be reintroduced and passed by the General Assembly. Given all these caveats, there is not too much to cheer about except in some conservationist circles there is a sense of something is better than nothing.

Local Environmental List-Serves and Web Addresses



For information on local environmental activities, join one of the following list-serves or check out a website:

- Community Greening Monthly Update of Parks & People Foundation, Inc.: info@parksandpeople.org
- E-news Stream of the Baltimore County Department of Environmental Protection and Resource Management (DEPRM): watersheds@baltimorecountymd.gov and DEPRM website at <http://www.baltimorecountymd.gov/go/deprm>
- Information about activities at Baltimore’s reservoirs: <http://www.baltimorecity.gov/government/dpw.water/rnrs/index.php>

Voting records of Greater Baltimore House Delegates and Senators:

- + vote is in favor of the bill
- vote is against the bill
- O excused from voting or excused absence
- 2 did not vote

BA = Baltimore County, HA = Harford County, BC = Baltimore City

Due to the paucity of strong legislative bills that went to a full vote in the Senate and House of Delegates, we have not scored the Delegates’ and Senators’ overall voting records as being positive or negative with respect to protecting the environment.

House Delegates	Local	District	HB 295	HB 1564	HB 1569	HB 315
Full House Vote Yea/Nea			123/15	131/3	110/23	107/31
Wade Kach	BA	5B	+	+	+	+
Joseph “Sonny”Minnick	BA	6	+	+	+	+
John Olszewski, Jr.	BA	6	+	+	+	+
Michael Weir, Jr.	BA	6	+	+	-	+
Rick Impallaria	BA & HA	7	-	+	-	-
J. B. Jennings	BA & HA	7	+	+	-	-
Pat Mcdonough	BA & HA	7	-	+	-	-
Joseph Boteler III	BA	8	-	-	-	-
Eric Bromwell	BA	8	+	+	+	+
Todd Schuler	BA	8	+	+	+	+
Emmett Burns, Jr.	BA	10	+	+	+	+
Adrienne Jones	BA	10	+	+	+	+
Shirley Nathan-Pulliam	BA	10	+	+	+	+
Jon Cardin	BA	11	+	+	+	+
Dan Morhaim	BA	11	+	+	+	+
Dana Stein	BA	11	+	+	+	+
Steven Deboy, Sr.	BA	12A	+	+	+	+
James Malone, Jr.	BA	12A	+	+	+	+
B. Daniel Riley	HA	34A	+	+	+	+
Mary-Dulany James	HA	34A	+	+	+	+
H. Wayne Norman	HA	35A	+	+	+	-

House Delegates	Local	District	HB 295	HB 1564	HB 1569	HB 315
Full House Vote Yea/Nea			123/15	131/3	110/23	107/31
Donna Stifler	HA	35A	+	+	+	+
Frank Conaway, Jr.	BC	40	+	+	+	+
Barbara Robinson	BC	40	+	+	+	+
Shawn Tarrant	BC	40	+	+	O	+
Jill Carter	BC	41	+	+	+	+
Nathaniel Oaks	BC	41	+	+	+	+
Samuel Rosenberg	BC	41	+	+	+	+
Susan Auman	BA	42	+	+	+	+
William Frank	BA	42	+	+	+	+
Stephen Lafferty	BA	42	+	+	+	+
Curt Anderson	BC	43	+	+	+	+
Ann Marie Doory	BC	43	+	+	+	+
Maggie McIntosh	BC	43	+	+	+	+
Keith Haynes	BC	44	+	+	+	+
Ruth Kirk	BC	44	+	+	+	+
Melvin Stukes	BC	44	+	+	+	+
Talmadge Branch	BC	45	+	+	2	+
Cheryl Glenn	BC	45	+	+	+	+
Hattie Harrison	BC	45	+	+	+	+
Peter Hammen	BC	46	+	+	+	+
Carolyn Krysiak	BC	46	+	+	+	+
Brian Mchale	BC	46	+	+	+	+

Maryland State Senators	Locality	District	SB 276	SB 163	SB 1065	SB 278
Full Senate Vote Yea/ Nea			45/2	34/12	33/13	36/9
Larry Haines	BA	5	+	-	-	-
Norman Stone, Jr	BA	6	+	+	+	+
Andrew Harris	BA& HA	7	+	-	+	+
Katherine Klausmeier	BA	8	+	+	+	+
Delores Goodwin Kelley	BA	10	+	+	+	+
Robert (Bobby) Zirkin	BA	11	+	+	+	+
Edward Kasemeyer	BA	12	+	+	+	+
Nancy Jacobs	HA	34	+	-	-	O
Barry Glassman	HA	35	+	+	+	+
Catherine Pugh	BC	40	+	+	+	+
Lisa A. Gladden	BC	41	+	+	+	+
Joan Carter Conway	BC	43	+	+	+	+
James Brochin	BA	42	+	+	+	+
Verna Jones	BC	44	+	+	+	+
Nathaniel McFadden	BC	45	+	+	+	+
George W. Della, Jr	BC	45	+	+	+	+

Environmental Winners & Losers - 2008 Baltimore County Rezoning Process

By Richard Klein
Community & Environmental Defense Services - ceds.org
410-654-3021 Rklein@ceds.org


Rural lands in eastern Baltimore County took the biggest hit during the 2008 Comprehensive Zoning Map Process (CZMP), when nearly a 100 acres of Resource Conservation (RC) land was upzoned to permit more intense use. The north county was again the big winner and gained more than a 1,000 acres of land downzoned from more intense uses to RC.

The CZMP occurs once every four years. The most recent CZMP ended a few months ago. During CZMP any Baltimore County resident can propose a change in the zoning applied to any parcel of land. Of course, zoning determines what uses are permitted on every square foot of land in the County, along with the intensity of use (e.g., houses per acre).

About two-thirds of Baltimore County is zoned RC. The RC zones were first established in the 1970s to protect farms, forests, and other environmentally sensitive lands from the sprawl which threatened to gobble up the county. At that time, sprawl posed two major threats to Baltimore County residents: rapidly dwindling acreage of working farms and dramatic increases in pollution loadings to our three water-supply reservoirs - Liberty, Loch Raven, and Prettyboy.

The adoption of RC zones made Baltimore County a leader in the nation with respect to rural preservation--a distinction the County still holds. And the leader of Baltimore County's leaders is no doubt Councilman T. Bryan McIntire.

Since first taking office in the early 1990s, Councilman McIntire has used the CZMP process to preserve more than 90,000 acres of north county lands. There is probably no other local elected official in the country who has single-handedly preserved



Calculate Your Carbon Footprint

Want to calculate your own carbon footprint – how much CO2 you put into the atmosphere and contribute to global warming? Here are 5 of the most popular online calculators:

- Carbon Footprint Ltd., England: <http://www.carbonfootprint.com/calculator.aspx>
- Nature Conservancy Carbon Footprint calculator: <http://www.nature.org/initiatives/climatechange/calculator/>
- Al Gore's Carbon Footprint calculator: <http://www.climatecrisis.net/takeaction/carboncalculator/>
- EPA Carbon Footprint calculator: http://www.epa.gov/climatechange/emissions/ind_calculator.html
- Berkeley Institute of the Environment Carbon Footprint calculator: <http://coolclimate.berkeley.edu/>

more rural land than Councilman McIntire.

During the 2008 CZMP, Councilman McIntire preserved another 1,027 acres in his district, which runs from Lutherville to Pennsylvania and from Reisterstown to Kingsville. The Greater Baltimore Sierra Club was extremely active during the 2008 CZMP and provided Councilman McIntire with a large part of the factual record he relied on. Had it not been for the efforts of Janet Schollenberger, Mary Corrdry, and other Sierrans, the north county might not have gained a 1,000 acres of new RC lands.

The area of RC-zoned lands also increased by 173 acres in the district of Council member Samuel Moxley. The greatest decrease occurred in the district of Councilman Joseph Bartenfelder, where 94 acres of RC-zoned land were rezoned for more intense, and potentially harmful, land uses. There was also a slight decrease in RC acreage in the district of Kenneth Oliver. A table showing how RC zones changed by Council district, along with other information regarding the 2008 CZMP, can be found at the Baltimore County page of the Community & Environmental Defense Services website: ceds.org/bcmd.

Opportunities to preserve the County's sensitive environmental resources did not end with the close of

the 2008 CZMP process. For example, the County is now in the process of adding a Water Resource Element to the Comprehensive Plan. This planning element provides an extremely important opportunity to preserve and enhance the County's streams, wetlands, reservoirs, and tidal waters from the impact of growth. However, it appears that the element is headed in a direction which will miss much of this opportunity.

To illustrate this opportunity missed, I will use but one of the County's numerous aquatic assets - trout streams. Of the 166 watersheds in Baltimore County, 72 support trout. It may surprise you to learn that Baltimore has more trout streams than any other county in Maryland, and a third of all Maryland trout streams are in Baltimore County. These streams are extremely sensitive to land use changes.

Based on 1996 land use data, 42% of our trout streams were endangered due to too much watershed development. Another 18% were on the cusp separating a healthy trout stream from a degraded ecosystem. Though more recent data are available, the County has not analyzed the data in a way that would make it possible to assess current watershed development intensities. Instead, the County's analysis has been limited to our 12 major watersheds.

The Water Resource Element planning process is an extremely important opportunity for the County to continue reaping the benefits of growth without sacrificing the high-quality environment which makes this such a great place to live. However, by limiting planning to just the 12 major watersheds, it is likely that we will continue losing more trout streams to poorly-planned growth. And it's not just trout streams at risk. Many other streams flow through suburban neighborhoods and provide a playground for our children. Yet, past development has rendered many of these streams hazardous to the health of our children. A thorough Water Resources Element planning process could prevent more hazardous playgrounds and begin the process of restoring degraded suburban streams. For further detail on the Water Resources Element planning process, visit the Baltimore County page of the Community & Environmental Defense Services website: ceds.org/bcmd.

Upcoming Greater Baltimore Group Meetings

Executive Committee Public Meeting

Sierra Club members and non-members are invited to attend the next quarterly public meeting of the Greater Baltimore Group's Executive Committee. The meeting is scheduled for **Thursday, July 16, 7:30 – 9:30 p.m.** at the Maryland Presbyterian Church near Towson. Come to participate in the discussions and planning.

Directions to the Maryland Presbyterian Church: Take the Baltimore Beltway (695) to Exit 28 (Providence Road). Take Providence Road north. The church building is on your right just outside the Beltway. Parking lots are in front and at the side of the building.



We Need Your E-mail Addresses!

The Sierra Club is most effective when our members show up at community meetings or hearings or contact their elected officials to voice their opinions and advocate for the environment. We can use e-mail to contact you more than the four times a year this newsletter affords us, in order to let you know about upcoming meetings or important legislation.

If you want to join this environmental hot-mail, give your e-mail address to Chris Yoder at: chris.yoder@mdsierra.org.

If you don't want to rummage around looking for outings schedules before each weekend, get on the **e-mail notification list for upcoming outings.** Send your e-mail address to Alan Penczek at: apenczek@stevenson.edu.

Outings Planning Public Meeting

New and prospective outings leaders are welcome to attend the next quarterly meeting of the Greater Baltimore Group's Outings Committee on **Thursday, June 25.** Come plan new outings and meet other outings leaders. If you're interested in leading outings and are curious about what is involved, come and talk with the outings leaders. The meeting will be held at the Panera Bread restaurant in Timonium, beginning with **dinner and socialization at 6:30 p.m.** in a quiet corner **and a meeting to follow at 7:00.**

Directions: From I-83 north, take exit 16 Timonium Rd. east, turn left on York Rd., and turn right at the next light for the Timonium Center across from the State Fairgrounds. The restaurant is in the right rear area of the parking lot beside Office Depot. For more information, call Bette at 410-666-2696.



In Search of Newsletter Contributors:

The deadline is **July 16th** for submissions to the mid-May Baltimore Sierran newsletter. We are seeking contributions from environmentalists of **all ages** and interests. We need articles, news, ideas, photographs, or poems related to the environment, conservation, or outings in Baltimore City, Baltimore County, or Harford County. Send contributions or ideas to Mary Corrdry at 410-239-4590 or 443-386-0862 or XXDiTz4LyFxx@aol.com or 4512 Willow View St., Hampstead, MD 21074.

Join the Young Sierrans

By Kathy Harget, Chair of Young Sierrans

Join the Young Sierrans (generally ages 25-45) for Socials, Day Hikes, & Other Outings. With more than 200 people on the email list, the Young Sierrans attract between 10 and 25 people from all around the Baltimore area to each outing. Our group includes many city dwellers, so we usually meet at the City Cafe in Mount Vernon for carpooling to our hikes and outings.

We also gather for libations and socializing on the second Thursday of every month at 7:30 PM, usually at a city watering hole like Rocket to Venus, Midtown Yacht Club, Joe Squared, or Club Charles.

Each spring we also do at least one service event. And in between the regular monthly events, we get together for fun and to support and learn about various environmental causes and city issues. We have four certified outings leaders, and we're always looking for new ideas and leaders.

For more information and details on upcoming outings, please visit our website: <http://maryland.sierraclub.org/baltimore/youngsierrans>. You can also feel free to contact the Chair of this group, Kathy, at youngsierrans@gmail.com, or 410-440-9896. Hope to see you on the trail or at one of our socials!



Interested in Population Issues?

The Population Committee of the Sierra Club Maryland Chapter is looking for new members. If you are interested in the problem of overpopulation—local, State, or world—contact Cliff Terry, GB Population Chair, at 410-944-9477 or Cliff.Terry@maryland.sierraclub.org. We offer fellowship and opportunities for you to take meaningful action.

BCAN MEETING

'Greening, Meaning, and Authentic Change. A Ful- filling Life that's Also Good for the Earth'

Wednesday May 13th, 2009, 6:30 - 8:30 PM

Presented by **Julie E. Gabrielli, NCARB, LEED**, founder of www.GOforChange.com, a movement that helps ordinary people contribute to the sustainability of the planet in powerful, life-changing ways. Followed by a brief open meeting of www.baltimoreclimate.org Open to the public. Free. At the **Towson Public Library**, 320 York Road, Towson, 21286. Inexpensive Parking available in adjacent garage, which provides direct access, via third level, to the library. Join us afterwards for drinks or eats to continue the conversation at an eatery down the block. Questions: mail [at] baltimoreclimate.org or 410-812-1447.

BCAN MEETING

'A Network of Self-Service Public Cars in Baltimore' Tuesday, June 2nd, 2009, 7 - 8:30 PM

Presented by **Tiffany James**, of the Parking Authority of Baltimore, and advocate for alternative transportation. Mayor Sheila Dixon wants to provide a network of low-emission, self-service vehicles available around the clock for the public to reserve when they can't walk, bike, or use public transportation. Fewer cars, cleaner air, healthier citizens, stronger communities & a cooler climate are the goal. Read the **'Car Sharing' article** - March 2009 or www.baltimorecarshare.org/ Followed by a half-hour open meeting of **Baltimore Climate Action Network**. Open to the public. \$4 suggested donation optional. **First Unitarian Church, Baltimore**, Charles St & Franklin St Baltimore, MD 21201 www.firstunitarian.net Join us afterwards for drinks or eats to continue the conversation at an eatery down the block. Questions: mail [at] baltimoreclimate.org or 410-812-1447 Free of charge.

Baltimore City “Cool Cities” and Transportation Updates

By Patrick McMahon, GB Transportation Chair

On-Street Bike Parking and Upcoming Baltimore Bicycling Events

With an active bicycle coordinator in Nate Evans, a Bicycle Advisory Group pushing for more, and the vigorous support of Mayor Sheila Dixon, Baltimore City is doing a lot around bicycling.

One of the signature projects this year, and something that promises to be a first of several similar projects, was the conversion of an on-street parking space in front of Eddie’s Market in Charles Village to a “bike corral” that provides space for 10 bicycles. The effort was strongly supported by Jerry Gordon, the owner of Eddie’s Market, and the Parking Authority. On March 20 the Mayor and an entourage of people rode their bikes up to Charles Village to cut the ribbon on the new bike-parking and for a celebration of sustainable transportation.

I hope that our members will attend many of the events listed below and, ideally, will contact me to volunteer and help with the events so that we can show our support for these efforts and help to make them more effective.

EVERY FRIDAY - MAYOR’S BIKE RIDES, Usually at 6:30 am but sometimes at 5:30 pm

The rides leave from War Memorial Plaza in front of City Hall. To get on the mailing list, e-mail Penny Troutner of Light Street Cycles at rustbike@aol.com.

MAY 1 - BALTIMORE BIKE SUMMIT, Traffic Management Center, 8 am - 4 pm

An open meeting of state & local officials, bike advocates, and enthusiasts to network and develop a game plan for biking in Baltimore.

MAY 15 - BIKE TO WORK DAY, Rally at War Memorial Plaza, 7 am - 9 am

Not just for bike commuters, come celebrate Clean Commute Month with a morning bike ride. Prizes, giveaways to be announced. Register online at <http://www.baltometro.org/content/view/258/230/>

MAY 17 - BIKE JAM, Patterson Park, 9 am - 5 pm

A day of bike races, events, music and food for the whole family

JUNE 14 - TOUR DEM PARKS, HON, Carroll Park, 7:30 am - 12 noon

Tour dem Parks is a major fundraising event focused on supporting groups and organizations dedicated to improving Baltimore’s park system. The event provides an opportunity to ride with friends and discover little-known city treasures.

JULY 17, 18, & 19 - ARTSCAPE BIKE PARKING, Univ. of Baltimore, 12 noon - 8 or 10 pm

ARTSCAPE will have a free bike-parking zone sponsored by UB. Anyone can park their own bike, but they need some volunteers to oversee the operation.

Contact Sierra Club Transportation Chair Patrick McMahon at patrick@mcmahon.com or Baltimore City Bike Coordinator Nate Evans at nate.evans@baltimorecity.gov if you’re interested in helping as a volunteer at any of these events.

Clean Commute Month

Many of the events listed for May in the article on bicycling in Baltimore City are being done as part of Clean Commute Month, a regional effort to support sustainable transportation decisions throughout the month of May. Listed below are links to two websites at the Baltimore Metropolitan Council with more information about events like Bike To Work Day locations throughout the Greater Baltimore region.

Clean Commute Month - <http://www.baltometro.org/content/view/982/574/>

Clean Car Clinics - <http://www.baltometro.org/content/view/988/581/>

2010-2013 TIP Public Review

The Baltimore Metropolitan Council is in the process of finalizing its Transportation Improvement Program (TIP). <http://www.baltometro.org/content/view/429/349/>. The TIP is the document that lists projects that will receive federal transportation funding over the next 4 years. By this stage, projects in the pipeline are difficult to change, but it’s worth paying attention to what is proposed so you’re not surprised when the bulldozers show up.

- | | |
|----------------|---|
| May 22 | Final Draft TIP and Conformity Determination available. Beginning of the public review and final comment period |
| June 17 | Public meeting for Final Draft TIP and Conformity |
| June 26 | Final Draft TIP Public Review and Final Comment Period Closes |

Carsharing in Baltimore (Update)

After a vigorous attempt to start a non-profit car sharing company to serve Baltimore City’s transportation needs, the Parking Authority of Baltimore City has determined that it is more effective at this point to put out another Request for Proposals (RFP) asking for a car-sharing company to serve City residents and businesses. It is disappointing that the non-profit effort did not work. However, Zipcar currently has a presence at Johns Hopkins University and Goucher College, and you can request Zipcar to serve your neighborhood by filling out the form at <http://www.zipcar.com/notify-me>.



Bike Sharing in Baltimore

Like carsharing, bike sharing is a way to have access to a bike without needing to own one or have one everywhere you go. Velib (in Paris, France) is the most well known bike sharing program, but they exist in a wide variety of places (including BikeSmartDC just down in Washington). B-cycle is in the process of setting up bike sharing in Denver, CO following the success of bike sharing during the Democratic National Convention. We can get them to think about expanding to Baltimore by filling out the form at http://bicycle.com/who_wants_it_more/.

New Quickbus Routes and Other Upcoming Route Changes

The Maryland Transit Administration (MTA) recently held three public workshops on proposals to implement two new Quickbus routes. Quickbus (QB) service was created with the intention to serve high-volume bus routes with limited stops, to reduce travel time for existing bus riders and attract new riders to the system. The only current Quickbus route, QB40, follows the corridor planned for the proposed Red Line, from Security Square Mall in the west to Essex in the east. Because of the success of that route, the MTA is now looking to add two new Quickbus routes.



One new Quickbus route would be between Downtown and Towson along the Greenmount Avenue/York Road corridor and would coordinate with the existing No. 8 line. The other would connect Cromwell Bridge Road near Towson with the University of Maryland Medical Center in downtown, roughly parallel to the existing No. 3 line. The MTA is still determining if these would replace or supplement existing express service and whether the route following the No. 3 corridor would follow the route of the local bus (serving Charles Village and Penn Station) or of the existing express route (bypassing those two for a slightly faster route through east Baltimore).

These two new routes are part of a set of changes that are planned to be implemented in August. Other routes that are likely to have changes are the 7, 14, 17, 24, 33, 35, 56, 59, and M17. Community meetings and public hearings to gather input on the proposed changes are listed below. More information about the proposed service changes will be posted at <http://www.mtmaryland.com/>.

May community meetings:

Monday, May 4

Towson Library Meeting Room
320 York Road
Towson, MD 21204
6:00 PM – 8:00 PM

Wednesday, May 6

Domain
Brewers Hill, Lobby Level
1200 S. Conkling Street
Baltimore, MD 21224
6:00 PM – 8:00 PM

June public hearings:

Monday, June 1

State Office Complex Auditorium
300 W. Preston St.
Baltimore, MD 21201
Noon – 2:00 PM

Monday, June 1

State Office Complex Auditorium
300 W. Preston St.
Baltimore, MD 21201
4:00 PM - 6:00 PM

Tuesday, June 2

Towson Library Meeting Room
320 York Road
Towson, MD 21204
6:00 PM - 8:00 PM

Commuter Benefits Expanded, More Changes in Store

At the end of 2008, Congress modified the existing commuter benefit, dramatically increasing the transit benefit and creating a new bicycling benefit. Participants in the Washington Metropolitan Transit Authority (WMATA) SmartBenefits Program and the Maryland Transit Administration (MTA) Commuter Choice Maryland Program will gain an additional \$110 each month on March 1, due to the recently-enacted economic stimulus funding that raises the tax-free transit benefit for employees from \$120 to \$230 a month.

This means that employers can provide their employees up to \$230 a month in tax-free public transportation benefits, affording employees the opportunity to

ride transit for less than full fare. The new federal legislation also set up a bicycle commuter tax benefit of \$20/month. The new bike benefit is cumbersome to utilize and cannot currently be paired with the transit benefit; but efforts are underway to address both of those issues.

SmartBenefits and Commuter Choice Maryland are incentive programs designed primarily to encourage area employees who drive to work to switch to transit or vanpools. In Maryland a commuter tax credit program, which began in 1999, is an added incentive from the State of Maryland to encourage employers to get involved with setting up commute alternative programs for their employees. Maryland's Commuter Tax Credit Program encourages Maryland companies to set up workplace commuter options programs that help to reduce traffic congestion, improve air quality, and conserve energy.

Sustainability Plan, One PLUS ONE, and Other City Legislation

Since the last newsletter was sent to the printer, Baltimore City's Sustainability Plan has been passed by the Sustainability Commission, the Planning Commission, and the City Council. The Commission is now beginning to discuss prioritization of the Plan, planning to develop a Climate Action Plan, and reviewing legislation that comes before the City Council and make recommendations.

The first legislative topic reviewed by the Sustainability Commission was the proposed One PLUS ONE plan, which would switch City trash collection from 2 days each week to 1 day per week and increase recycling pickup from every other week to every single week. This change will reduce the overall labor and expense needed for residential solid waste collection. The employees and funds freed up by this switch will be tasked to address education about and enforcement of the new policy and to target alleys and other areas for more cleanups. The One PLUS ONE strategy is included as a strategy within the Sustainability Plan and is designed to build on the 30 percent increase in recycling that took place in 2008 when the City switched to single

stream recycling. As a result, the Sustainability Commission endorsed the policy. More information about this issue can be found at http://rhic-views.blogspot.com/2009_04_01_archive.html and <http://baltimorecity.gov/government/dpw/>.

Other legislation that will come before the Commission includes the various proposals to reduce the use of plastic bags and to give City tax credits for solar power and green buildings. With all of the issues brought before the Commission, it is our responsibility to consider how they affect the three legs of the sustainability stool - People, Planet, and Prosperity. If the Commission determines that a proposal would help the planet but that the financial or other costs of the idea outweigh its benefits, the Commission will likely recommend against adoption of that legislation or policy.

There is a lot of work to come implementing the Sustainability Plan. We're going to need the help of all the Sierra Club members that helped draft the plan and more to refine it, make it happen, and live up to its ideals. Find more information about the Sustainability Plan, Commission, and Office at <http://www.baltimorecity.gov/sustainability/>.

Area Environmental News and Activities

- In the 1920's a blight killed the dominant tree on the East Coast, the American Chestnut. A few are still found alive in Western Maryland at Sugarloaf. The Chestnut Society collected the seeds and grew seedlings. On April 4, the Baltimore County Forestry Board and Oregon Ridge Park planted 100 three-foot American Chestnuts on the ridge at Oregon Ridge, reintroducing the original species where the gypsy moth destroyed oaks.
- Forestry Boards in Maryland's counties and Baltimore City are accepting applications from students entering 9th grade for the 2009 Natural Resources Careers Conference. The conference is scheduled for July 19 – 25 at the Hickory Environmental Education Center in Garrett County. Students join field professionals for intense instruction and fun in forestry, wildlife ecology, fisheries, arboriculture, watershed management, natural resources management, and GIS and GPS technology. For applications and information, go to: www.mdforest.sailorsite.net.
- Instead of selling all of its recycling collections commercially, Baltimore County operates its own recycling plant in Cockeysville, to which Harford County also ships its plastic, glass, and metal cans. If the recycling materials were disposed of as trash, it would cost the county \$37 a ton. In 2007, Harford County recycled 189,427 tons, Baltimore City 217,026, and Baltimore County 1,213,330.

- The Baltimore County Department of Environmental Protection and Resource Management is proposing a project to dredge the Pleasure Island Channel ("the cut") and place the dredged material on the south shoreline of Pleasure Island to create a beach. The beach will be protected by a series of segmented breakwaters along the south and southwest shoreline. Pleasure Island is a small island in the Chesapeake Bay, adjacent to Hart-Miller Island (also a recipient of dredged materials with a beach and other recreational improvements – **See the Outings List for a kayak outing to Hart-Miller Island on July 19**). It is owned and managed by the Maryland Department of Natural Resources (DNR). The State has committed \$1 million in DNR funds to date. The County has applied for additional State funds from the Waterway Improvement Program and the Department of the Environment 2010 Bay Restoration Fund. For more information, call Baltimore County DEPRM at 410-887-2904.
- During the first bow-hunting season, September 15 – January 31, in a 2 ½ square mile northern section of Loch Raven Reservoir, 184 deer were killed from a herd of nearly 900. Baltimore County then contracted with the U.S. Department of Agriculture for a deer culling by sharpshooters for three weeks at night beginning in mid-February around the Piney Branch Golf Course and Loch Raven Skeet and Trap Center. An additional 218 deer were killed, with the meat donated to charity. Baltimore City will study effectiveness of this herd thinning by evaluating forest-regeneration at 21 sites this spring and fall. The large population of deer has been devouring the young plants and trees that the forest depends on for regeneration. The surrounding forest and vegetation help deter runoff and pollution, protecting the water quality of Loch Raven Reservoir, the largest of Baltimore City's three reservoirs. It supplies drinking water for more than 2 million residents.

Worm Composting In Rowhomes

by Patrick McMahon

Sierra Club members living in apartments, rowhomes, or other places with limited outdoor space can reduce their contribution to the landfill or incinerator and create some good soil by vermicomposting, or worm composting.

My wife and I received a worm composting bin for our wedding; but it's relatively easy to make them from old plastic bins in which you purchase cat litter, storage totes, or wood. It's important to have some ventilation on the top and a way to drain liquid on the bottom. The worms need to have some bedding in which to live. I've always preferred coconut coir, but you can also use shredded paper or peat moss. For the worms, you need to get red wiggler worms (regular earthworms won't do). There are a variety of sources. As long as you feed them consistently, they should thrive and multiply.

Start introducing food scraps slowly, avoiding all meat, oil, dairy, or fat. I've heard that the worms don't like onions and that peels from bananas or citrus fruits also aren't good; but I haven't found any of that in my brief research for this article. I begin with some bedding at the bottom, and then add equal parts of vegetable scraps and bedding every 3-7 days.

For vertical composting bins like mine, emptying it out and sifting to find the majority of the worms can be frustrating if you're in a hurry. It's important to realize you don't need to get them all (you'll be putting the soil in your garden) and it can be a game (my daughter loves searching for worms). Wider composting bins make it easier to add food just on one

side to attract the worms to that side, so finished compost can be harvested from the other side.

I've listed some websites below that provide valuable information, and feel free to contact me:

- <http://www.eastcoastorganics.com/coconut.php> - Located at 28th & Sisson in Baltimore City and a great source for coconut coir
- <http://mastergardener.umd.edu/local/Howard/OurActivities/Composting.cfm> - Cooperative Extension page on composting
- <http://www.hgic.umd.edu/media/documents/IndoorRedwormCompostingHG40pfv.pdf> - MD Cooperative Extension handout
- <http://www.wormwoman.com/acatalog/vermicomposting.html> - Mary "Worm Woman" Appelhof was a pioneer of worm composting, and her site continues although she died in 2005
- <http://www.wikihow.com/Make-Your-Own-Worm-Compost-System> - One of many guides to building your own worm composter
- <http://yucky.discovery.com/flash/worm/> - Discovery Kids on worm composting with your kids
- <http://www.wormdigest.org/content/view/15/2/>
- <http://lancaster.unl.edu/pest/resources/vermicompost107.shtml> - A good basic overview of vermicomposting
- <http://www.wormdigest.org/> - Lots of good information but a poorly laid out website.

"Shinrin-Yoku" – Taking in the Atmosphere of the Forest

The Wilderness Society's website at www.wilderness.org (blog, page 3) includes an article from the Society's October 2008 newsletter by Jennifer Ackerman, "Breathing Trees." The article examines the physiological effects of "Shinrin-yoku." Recent scientific studies show a reduction in blood pressure, diabetes, and cancer by walking in old-growth, broad-leaf forests. Japanese scientists found that walking in a forest decreases the blood glucose levels of diabetic patients. Also, people who view forest scenery for 20 minutes have 13 percent lower blood concentration of cortisol, the stress hormone, than people viewing urban settings. Forest walking, as compared with city walking, boosts the activity of immune cells that fight cancer – an effect that may last for as long as 30 days. In 2008, people living in areas with a higher percentage of forest cover than those living in areas with lighter forest cover had lower mortality rates for cancers of the lung, breast, uterus, prostate, kidney, and colon.

Local Environmental Activities

For non-Sierra Club invasive plant removal activities, planting of trees and other native species, stream cleanup, and stream monitoring, contact the following organizations for information about training sessions and outings:

- Cromwell Valley Park, contact the park office at 410-887-2503 Mon–Fri 9-2 or info@cromwellvalleypark.org or contact Bill Breakey at breakeys@comcast.net for information about invasive plant removals in the park the 2nd Saturday of each month, 9 am-noon (8 – 11 am during the summer). Tools and refreshments are provided. You may also call to volunteer to participate in trail maintenance outings. Check out the park’s varied activities at its website www.cromwellvalleypark.org.
- Gunpowder Valley Conservancy, 410-343-3478 or info@gunpowderfalls.org, www.gunpowderfalls.org. Volunteers are needed for tree plantings this spring, Stream Watch, and other activities. Contact Peggy Perry, Assistant Program Director of Education and Restoration, at 410-668-0118 or little-owl@msn.com. As one of the few land trusts in Baltimore County, GVC places land, which it obtains through purchase or donation, in perpetual conservation easements for protection and monitoring.
- Irvine Nature Center, 410-484-2413, www.explorenature.org. Last August, Irvine Nature Center opened its new facility at 11201 Garrison Forest Road in Owings Mills. Besides the nature center with interactive, informative exhibits and an extensive gift shop, the center has hiking trails through woods and meadows, including blinds for bird-watching.
- Gwynns Falls Watershed Association, 443-429-3183, info@gwynnsfalls.net. Volunteers are needed to monitor local streams and report sewer leaks to responsible local agencies. Help to reduce storm water runoff by promoting the restoration of vegetation cover through stream-friendly landscaping and land-use practices as well as

community planting projects. Community clean-ups are organized to reduce litter and dumping that degrade the streams and communities.

- Herring Run Watershed Association, 410-254-1577, volunteer@herringrun.org, www.herringrun.org. Volunteers are sought to adopt sections of Herring Run to monitor, report, and prevent pollution. A trail through Herring Run Park is maintained, and invasive species are removed. Workshops are held for constructing rain barrels, which can save the average homeowners up to 1,300 gallons of water during peak summer months. Trees are planted in local parks. Native plants are sold at the Herring Run Nursery. Visit the new “green” state-of-art Watershed Center at 3545 Belair Road in Baltimore City.
- Jones Falls Watershed Association, 410-366-3036, www.jonesfalls.org. Join them for watershed restoration projects (invasive plant removals, tree planting, etc.) 9:30 –12 on the 2nd Saturday of each month. Hundreds of native trees are available for planting. They have a Stream Waders program to monitor local streams for aquatic life. Citizens are asked to report sewage leaks to the City by calling 311. Contact David Flores, the new Environmental Restoration Manager, for more information about activities and volunteer opportunities at dflores@jonesfalls.org.
- Maryland Native Plant Society, www.mdflora.org
- Patapsco State Park, 410-461-5005 or 1-877-620-8DNR, park-patapsco@dnr.state.md.us, www.dnr.Maryland.gov. Check out the on-line newsletter for events and volunteer opportunities for trail maintenance and invasive plant removal in the various sections of Patapsco State Park at http://www.dnr.state.md.us/publiclands/spring_summer_2008_tributary_pub.pdf.
- Prettyboy Watershed Alliance, <http://www.prettyboywatershed.org/> or email prettyboywatershed@gmail.com. The Alliance sponsors stream cleanups, tree plantings, and trail maintenance.
- Urban Weed Warrior Program, Baltimore City Recreation & Parks, 410-396-0359, weeds@baltimorecity.gov. Get trained as a weed warrior and help to eradicate invasive species in the City’s parks. For information about upcoming invasive plant removals, contact Elizabeth Concra, Environmental Training Specialist, at 410-396-0339 or 443-602-5264 or Elizabeth.Concra@baltimorecity.gov.

Non-Sierra Club Outings

Check out the websites of the following non-Sierra Club organizations for information about their hikes, trail work trips, educational and conservation activities, and invasive species removals:

- Appalachian Mountain Club, D.C.: <http://www.amc-dc.org/Events/date.htm>
- Baltimore Bike Club: www.baltobikeclub.org
- Baltimore Canoe Club: www.baltimorecanoecub.org
- Biotrek Naturalists: www.biotrek.org
- Center Hiking Club: www.centerhikingclub.org
- Chesapeake Audubon Society: <http://www.chesapeakeaudubon.org/fldtrips.htm>
- Chesapeake Paddlers Association: <http://www.cpakayaker.com/index.html>
- Harford Senior Outings Club: contact Jack Dettner at 410-638-1433 to join their email list.
- Maryland Native Plant Society: <http://www.mdflora.org/events/currentevents.html>
- Maryland Outdoor Club: www.marylandoutdoorclub.org
- Mid-Atlantic Off-Road Enthusiasts (MORE): www.more-mtb.com
- Mountain Club of Maryland: www.mcomd.org

Steps to Becoming an Outings Leader

Experience is not required. You don’t need to be a naturalist. Training and mentoring are provided.

√To find out how to get started, contact Jack Wise, Outings Chair, at 410-256-3963. Jack has information and resource materials that are useful for new leaders.

√Outings leaders are required to be a Sierra Club member and at least 18 years old.

√Take the Sierra Club Outings Leader training (Basic OLT 101) or comparable training from a local outings entity. Jack will give you the access codes for the on-line course of the National Sierra Club. He also has a paper copy of the course.

√Arrange to take a Red Cross basic first aid course or a comparable or higher level course. Purchase the required first aid kit, such as the basic kit sold by REI. The Sierra Club will reimburse you for your expenses. Contact Katja Kjelgaard, Group Treasurer, at 410-455-0408 or

kkjelgaard@verizon.net about reimbursement.

√Provisionally lead at least one outing, accompanied by an experienced outings leader.

√Once you have completed these requirements, inform Jack and contact Bette Thomson, Outings Gatekeeper, at 410-666-2696 or bette888@verizon.net. She will add you to the list of outings leaders and will publicize your outings in the Group’s and Chapter’s newsletters and websites and with local media.

BOOK REVIEW

By Joyce Fletcher

*Eiger Dreams by Jon Krakauer
Published by Random House, 186
pages, \$14.95 paperback
Pratt Library Call #GV200.K731990
Baltimore County Library Call
#796.522

Jon Krakauer has put together a dozen essays connected by a fabric of cold, rock, and borderline insanity. These essays were published as magazine articles during the 1980's. Most are 20 pages or less and encompass extreme sports such as canyoneering, bouldering, and waterfall climbing.

Bouldering is not necessarily high, far, or long but instead is a technically demanding climb using only chalky hands, muscles, and concentration. Canyoneering is a hybrid sport consisting of rock climbing, river running, and extreme backpacking. Waterfall climbing is a misnomer - the waterfall has to be frozen solid, making it accessible only in winter.

The title of the book comes from the Eiger, a legendary mountain in Switzerland composed of limestone and black ice that has killed 44 climbers to date. Another essay covers the pilots who ferry climbers to Mount McKinley, about 50 miles from Talkeetna, Alaska. Climbers are dropped off and picked up on the glacier near the 7,500-foot elevation of the mountain. The flying is risky; the landings and takeoffs riskier still. This is due to downdrafts, shifty winds, and slippery, crevasse-riddled glacier surfaces.

Chamonix is a French town resting in the shadow of Mont Blanc and known as the world capital of climbing and skiing. The highest point in Europe at 15,771 feet, Mont Blanc is heavily used by climbers and skiers and is the home to an assortment of thrill sports such as flying off mountaintops in paragliders and rolling downhill inside of large inflatable balls. Dr. Michel Gabriel Paccard invented mountain climbing as a sport when he summited Mont Blanc on August 8, 1786. Since then, more than 2,000 climbers have died trying, making it one of the deadliest peaks.

Mount McKinley, more often known by the Athabaskan name of Denali (the high one), is the highest peak in North America and the tallest climb from base to summit. It occupies about 120 square miles of earth surface and rises 20,320 feet into howling 100 mile an hour winds and 40 below zero temperatures. Climb-

ing it can cost up to \$5,000 and take three weeks or more, depending on the weather. Summitting is not guaranteed. Neither is surviving. McKinley has killed more than the Eiger.

For years there was a debate regarding the height of mountains taller than Everest. In the 1930's, a Chinese peak now known as Gongga Shan was recorded at 30,250 feet. Another Chinese peak, Anye Machin, was reputed to be over 30,500 feet. Both were disputed and proved lower. Chimborazo, also known as K2, was measured at 29,228 feet. The name "K2" is a designation used by British surveyors when it was measured in 1856. Krakauer details the difficulty in calculating Himalayan peaks using theodolites. It is a tricky business involving distance, refraction, and plumbline deflection, with an error in one number affecting all the others. In 1987 Doppler and GPS placed K2 at 28,268 feet and Everest at 29,108 feet.

Everest may reign as the tallest peak, but K2 is considered a much more graceful and striking mountain. It is also much harder to climb. Of all the mountains greater than 8,000 meters, it has the greatest failure rate. Krakauer chronicles a devastating summer of climbing failures on K2 in 1985 when out of every two who summited, one would die—13 in all.

Each essay stands alone; each is crisply written and thought provoking. This is a good read for those August days when the temperatures soar and the humidity is in close pursuit.

Outings of the Sierra Club Greater Baltimore Group

(Continued from page 1)

Sat. & Sun. May 16 & 17 GB - Moderate. Car Camping at Caledonia State Park in Michaux State Forest

Day hikes exploring streams and lakes. We will hike part of the Appalachian Trail with some good views. For details, call Jack at 410-256-3963.

Sun. May 17 GB – Easy. Hike in Leakin Park (Children are welcome).

3 miles through woodlands and wetlands and along a stream at Leakin Park in Baltimore City, including a stop at Carrie Murray Nature Center to see the bug zoo, snakes, birds of

Participating in Sierra Club Hikes & Other Outings

1. Sierra Club outings are open to everyone—members and non-members. Activities are normally "rain or shine" at the leader's discretion. Check with the leader if the weather appears threatening. **Reservations are not required and there is no charge**, unless noted in the announcement.
2. Beginners are welcome. If you haven't hiked before or not for a long time and aren't sure about your capabilities, choose an easy outing to start out. The outing's difficulty level is stated in the announcement. Call the leader if you have questions about the terrain, difficulty, duration, or what you should bring.
3. Children under 18 years old must be accompanied by a parent, guardian, or other responsible adult. Check out the outing's details and call the leader ahead of time to find out if the hike is suitable for children, particularly if you want to bring a very young child. If older teenagers want to attend without their parents, they must have the outing leader's prior consent and have a permission slip signed by their parent/guardian.
4. Dogs and other pets are not allowed on Sierra Club outings, unless the announcement specifies that the outing is "dog friendly."
5. Participants must have the proper clothing, shoes, equipment, and stamina for the event. Bring at least one quart of water for every five miles or two hours of hiking. Bring a lunch, snacks, or more. **Always** bring rain gear. In cold weather, dress in layers with synthetics or wool against your skin. Avoid cotton. Wear good hiking boots that support your ankles, which you've broken in **before** the hike. Carry a personal first aid kit. Bring any medications that you may need. A hiking stick can come in handy.
6. All participants in Sierra Club outings are required to sign a standard liability waiver before the outing begins.
7. Practice "Leave No Trace" hiking. Keep on the trail to avoid trampling things or getting hurt.
8. Keep with the group. A "sweep" is usually designated to go last and make sure no one gets lost or runs into trouble.
9. Since there are rarely bathroom facilities, every hour or so the outing leader will announce a "separation". Men and women walk out of sight of each other to answer Nature's call.
10. It is encouraged that outings participants carpool between a meeting place and the trailhead. However, the Sierra Club does not have insurance for carpooling arrangements and assumes no liability. Carpooling is strictly a private arrangement among the participants, who assume full responsibility and liability for all risks associated with such travel.

prey, and other educational exhibits (if open). Children under 18 must be accompanied by a parent or other responsible adult. Meet at 10 AM in the parking lot on Windsor Mill Road, with lions at the entrance where the Crimea mansion is located. Contact Mary at 410-239-4590 (home), 443-386-0862 (cell), or email at XxDiTz4LyFxx@aol.com.

Sun. May 17 GB – Moderate. Bicycle Ride on the Gwynns Falls Trail (Children are welcome).

Explore all or part of the new 15-mile bike trail that runs from near Rt. 70, through a series of parks along the Gwynns Falls to Middle Branch Park at Baltimore City's waterfront. Learn about the area's history and land use as we ride beside the Gwynns Falls

with its waterfalls, through woods, across bridges over railroad tracks, through quiet city streets near Ravens stadium, close to the sky ramps for I-95, and beside wetlands of the Middle Branch. Children under 18 must be accompanied by a parent or other responsible adult. Meet at 1 PM with your bicycle at Trailhead # 2, Winans Meadow – Leakin Park, 4500 Franklintown Rd off of Cooks Lane/Security Boulevard in Baltimore City. Contact Mary at 410-239-4590 (home), 443-386-0862 (cell), or email at XxDiTz4LyFxx@aol.com.

Sat. May 23 GB – Easy. Susquehanna River Canoe/Kayak Trip in Harford County

We will paddle from Havre de Grace up the Susquehanna River and around

(Continued on page 15)

Outings of the Sierra Club Greater Baltimore Group

(Continued from page 14)

Garrett Island, now a Federal wildlife refuge. Approximately four miles of exploration with luncheon stop on the trip. Stop along the Havre de Grace North Park Trail. Excellent beginning level trip with nice scenery to explore. Call leader for details, Jack D. at 410-638-1433.

Fri. May 29 - Sun. May 31 GB – Easy. Camping and Blues Festival in Hagerstown

"I got dem Hikin' Blues" outing in Hagerstown, MD. We will leave the Baltimore area about 4:00 PM Friday evening and stay at the [Hagerstown/Antietam KOA Kampground](#) Friday and Saturday evenings (tent, RV, or Kabin camping). Carpooling is encouraged, and alternate arrangements may be made among participants. We will discuss the history of the canal and the City Park, and consider positive and negative environmental impacts of commercial campgrounds. Saturday morning is a good opportunity to visit the [Hagerstown factory outlets](#), including LL Bean and Timberland. From about noon to 8 PM we may attend the [Western Maryland Blues Festival](#) downtown, which costs about \$30-\$35 per person. Sunday morning we will take a 3-5 mile easy hike on the C&O canal near Williamsport, and visit the museum. From about noon until 5:00 PM we may attend the second half of the Blues Festival (no charge) at the beautiful [City Park](#). We will do an easy circuit hike of about 2 miles. For more information and reservations, contact Paul (preferably two weeks ahead) at 410-667-4889 or email pstech@smart.net. Children OK with prior approval. Check out <http://www.blues-fest.org/>.

JUNE

June to August GB – Easy. Two Tubing Trips on Deer Creek in Harford County

A different location for each trip. Dates to be determined when adequate creek levels occur. This is a chance to explore a Harford creek

environment in a very leisurely manner. Call Jack D. at 410-638-1433 for details and to get on the call list for either or both trips.

Wed. June 3 GB - Moderate. Loch Raven Sunset Hike

2-3 miles on fire trails exploring the Loch Raven Reservoir area. Meet at 7:00 PM at Loch Raven Drive and Morgan Mill Road. Call Jack at 410-256-3963.

Sat. June 6 GB - Easy. James Run Kayak/Canoe trip in Harford County

We will paddle up and down the James Run starting at Route 40 near Belcamp, MD. We will explore this flat-water environment partly in the Bush Declaration Natural Resources Management Area and with some paddling out into the Bush River. Aquatic birds, marshes, etc. On my last trip I paddled by a beaver and baby beaver on the bank. For details, call Jack D. at 410-638-1433.

Wed. June 10 GB – Easy. Evening Hike at Prettyboy Reservoir (Children and dogs are welcome)

2 miles along the shoreline and through forests around Prettyboy Reservoir along the old Prettyboy Trail, newly re-discovered and maintained by the GB Sierra Club in collaboration with the Prettyboy Watershed Alliance and the Mountain Club of Maryland. Explore the pristine water and wildlife along this isolated trail. Look for beavers. Meet at 6:30 PM at the Mt Carmel Rd. park and ride just west off I-83 north of the Baltimore Beltway. For more information, contact Mary at 410-239-4590 (home), 443-386-0862 (cell), or email at XxDiTz4LyFxFxX@aol.com.

Sun. June 14 GB – Easy. Kayaking and Day at the Beach at Hammerman State Park

Kayak where the Gunpowder River and Dundee Creek empty into the Chesapeake Bay. Explore the marshes and shoreline and look for wildlife in the air, in the water, and along the shores. Meet at 10 AM on the beach next to the Ultimate Watersports concession at the Hammerman Area of Gunpowder State Park.

The park is on Ebenezer Rd. reached from the Whitemarsh Blvd. east exit off I-95. Bring your own or rent a kayak from Ultimate Watersports. It is required to wear a life jacket. There is an admission fee to the park. Stay afterwards or join us later for a picnic lunch and day at this sandy beach, which has picnic tables, a bathhouse, playground, etc. Kayaking is weather-dependent—no threat of thunderstorms and no high waves in the Bay. For details, call Mary at 410-239-4590 (home), 443-386-0862 (cell), or email at XxDiTz4LyFxFxX@aol.com.

Thurs. June 18 GB – Easy. Picnic and Stroll at Cromwell Valley Park (Children and dogs are welcome)

Between 6 and 7 PM, meet on the lawn in front of the Sherwood House at Cromwell Valley Park for an informal picnic and socialization. Bring your own food and drink and, if you wish, bring something to share. At 7 PM, we'll hike for about two miles through the woods and meadows and along streams, with some hills. Children of all ages are welcome. Dogs must be on a leash and friendly. Meet in the park's Sherwood Farm section on Cromwell Bridge Rd. north from the Baltimore Beltway (take the Cromwell Bridge Rd. exit). For more information, contact Mary at 410-239-4590 (home), 443-386-0862 (cell), or email at XxDiTz4LyFxFxX@aol.com.

Sun. June 21 GB – Easy. Gunpowder Falls between Falls and Bunker Hill Rds.

4 miles. Enjoy the first day of summer on this hike that follows portions of the Gunpowder North and South Trails along one of the prettiest sections of river in the State. Trail is level but long pants and sleeves are recommended to protect against occasional overgrowth. Will discuss efforts to protect river quality. Meet at 1:00 PM at parking area where Masmore Rd. meets the Gunpowder River. Take I-83 to Mt. Carmel Rd. and exit west. After approximately one-half mile, turn right onto Masmore Rd. Continue 1.5 mile to parking area after sharp curve and just before bridge. Some additional parking across bridge. Cancelled for steady rain. For more details, call

Alan at 443-212-5082 or email apenczek@stevenson.edu.

Thurs. June 25 GB – Easy. Outings Planning Meeting

New and prospective outings leaders are welcome to attend the next quarterly meeting of the Greater Baltimore Group's Outings Committee. Come plan new outings and meet other outings leaders. If you're interested in leading outings and are curious about what is involved, come and talk with the outings leaders. The meeting will be held at the Panera Bread restaurant in Timonium, beginning with dinner and socialization at 6:30 PM in a quiet corner and the meeting to follow at 7:00. From I-83 north, take exit 16 Timonium Rd. east, turn left on York Rd., and turn right at the next light for the Timonium Center across from the State Fairgrounds. For more information, call Bette at 410-666-2696.

Sun. June 28 GB - Moderate. Gunpowder River Tube Trip.

Bring a tube or rent one at the Monkton Station. Have a way of keeping your keys in your pocket, such as a safety pin or zipper jacket. Wear sun screen and bring water. Meet at the Monkton Station and the NCR Trail at 1:00 p.m. The Monkton Station is on Monkton Road about a mile or two off of York Road. For details, call Jack at 410-256-3963.

JULY

Sun. July 19 GB – Moderate. Kayaking at Rocky Point Park

Kayak from this waterfront park to Hart Miller Island, a short paddle across in the Chesapeake Bay. Learn about and see Hart Miller (built from dredge spoil), which is a favorite hangout for boaters and has a campground, observation tower, sandy swimming beaches, waterfowl, and floating vendors. Meet at 10 AM at the boat launch in the far end of Rocky Point Park past the beach area. Bring your own kayak. It is required to wear a life jacket. There is an admission fee to the park, which has a sandy beach, grassy shaded area with picnic tables and playground, sailboat rentals, and a marshy area with a fishing pier. The park is reached from Rt.

(Continued on page 16)

Outings of the Sierra Club Greater Baltimore Group

(Continued from page 15)

702 and Back River Neck Rd. from the Baltimore Beltway 695 east. Kayaking is weather-dependent—no threat of thunderstorms and no high waves on the Bay. For details, contact Mary at 410-239-4590 (home), 443-386-0862 (cell), or email at XdDiTz4LyFxX@aol.com

AUGUST

Sun. Aug. 9 GB – Easy. Kayaking and Camping at Codorus State Park

Kayak around the 1,275-acre Lake Marburg at Codorus State Park, just across the State line in Pennsylvania. We will swim along the shoreline, and have lunch on an island. Meet at 11 AM at the park office/visitor center, to purchase a Pennsylvania 2009 boat launch permit for a small fee. Bring your own kayak. It is required to wear a life jacket. Kayaking is weather-dependent—no threat of

thunderstorms. There is no admission fee to the park which has many activities and facilities—several boat launches, a campground with 190 sites, cottages and yurts, trails, picnic grounds, playgrounds, swimming pool. The park is reached from Rt. 30, becoming Rt. 94 at the State line. Follow the signs for Codorus State Park and before reaching Hanover turn right at a stoplight for Grandview Rd. and then right at Rt. 216. Before the first bridge, turn left and then another left to go to the park office/visitor center. (From I-83, take Exit 8. Go 18 miles west on Rt. 216 to the park. After crossing the lake, turn right and then left to the park office/visitor center.) If you want to camp at the park that weekend (which includes dog-friendly sites), make a reservation at www.visitPAparks.com or 1-888-PA-PARKS (727-2757), or take your chances without a reservation. For details, contact Mary at 410-239-4590 (home), 443-386-0862 (cell), or email at XdDiTz4LyFxX@aol.com

Wed. Aug. 12 GB – Easy. Loch Raven Evening Hike and Star Party (children and dogs welcome)

Come just for the hike, just for the star party, or both! The hike will be 3 miles to a scenic overlook above the Loch Reservoir. After sunset we will gather on the shore to watch the Perseid meteor shower, usually the best meteors of the year. Bring something to sit on (such as a folding chair) and refreshments if you like. Meet at 6:30 PM at Loch Raven Drive and Morgan Mill Rd. for the hike. For the meteors we will set up one-half mile south on the lawn near the “island” in the reservoir. Hike will still take place if cloudy, but cancelled for steady rain. For more details, call Alan at 443-212-5082 or email apenczek@stevenson.edu.

SEPTEMBER

Sat. Sept. 12 GB – Moderate. Stony Run Trail Hike (Older children and dogs are welcome)

5½ miles along the Stony Run stream through Baltimore neighborhoods including Hampton and Roland Park

and through Wyman Park. The trail is well-maintained, mostly flat and shaded, with scenery ranging from jungle to manicured parks. Go underneath several bridges decorated with graffiti. Learn about and see firsthand the results of extensive stream restoration by Baltimore City (which may still be in process) and the planting of native trees by the Jones Falls Watershed Association and other volunteers. Children under 18 must be able to hike this distance and be accompanied by a parent or other responsible adult. Dogs must be friendly. Optional lunch afterwards. Meet at 10 AM and park on either side of Wyman Park Drive beside the ex-Stieff Silver and the Boy Scouts headquarters, or in the parking lot on the left with the Jones Falls Trail sign. From 28th or 29th Street just east of I-83 Jones Falls Expressway, turn north onto Keswick Rd./Sisson St. and then take the first left onto Wyman Park Drive. For more information, contact Mary at 410-239-4590 (home), 443-386-0862 (cell), or email at XdDiTz4LyFxX@aol.com.

Non-Profit
Organization
U.S. Postage Paid
Elkton, MD
Permit No. 85

Baltimore Sierran

Sierra Club mission: Explore,
enjoy and protect the planet.

7338 Baltimore Ave, Suite 101A
College Park, MD 20740



John Muir, founder of the Sierra Club, said: “If people in general could be got into the woods, even for once, to hear the trees speak for themselves, all difficulties in the way of forest preservation would vanish.”

MOVED?

Report your address change to:

(415) 977-5653

Sierra Club Member Services
P.O. Box 52968
Boulder, CO 80328-2968

