



Baltimore Sierran

Serving members in Baltimore City, Baltimore County, & Harford County May 2008

Sierra Club Mission: Explore, enjoy and protect the planet

Opportunities for Involvement (see inside for more information):

- June 20 – Happy Hour Social
- June 26 - Outings Planning Meeting
- July 17 - Executive Committee Public Meeting
- 2nd Thursday of each month - Young Sierrans Socials
- Saturday after 2nd Thursday of each month – Young Sierrans Outings
- See Outings Schedule in newsletter and on website

2008 Legislative Environmental Bills

by Janet Schollenberger, GB
Group Political Chair

Environmental legislation received a lot of attention in the 2008 Maryland General Assembly. Energy efficiency and alternative fuel use formed the largest category of bills. Legislation that will have the biggest impact on protecting the Chesapeake Bay is the Critical Area Act. In this newsletter, check out the summary of 10 important bills that were passed into legislation and how your representatives voted.

Energy Legislation

HB377/SB207 Solar and Geothermal Tax Incentive and Grant Program – expands the grant program to finance the installation of household renewable energy projects, such as solar water heating systems. For example, solar water heating grant was increased from a maximum of \$2000 or 20%, whichever is less, to \$3000 or 30% of the cost, whichever is less.

HB374/SB205 Empower Maryland – establishes a goal to reduce per capita energy use 15% by 2015. Utilities and the Maryland Energy Administration will offer energy efficiency incentives to consumers. Projected energy savings by 2020 is \$4.1 billion.

HB368/SB268 MD Strategic Energy Investment Program – funds energy efficiency programs for the low-income people, offsets utility rates from the sale of carbon allowances under the Regional Greenhouse Gas Initiative (RGGI) that Maryland joined in 2006. The RGGI is a market based cap and trade program to reduce carbon dioxide emissions in the Northeast by adopting energy efficiency policies that promote renewable resources and lower emission fuels, and energy efficiency improvements. Other partners include Connecticut, Delaware, Maine, New Hampshire, New Jersey, New York, Vermont, Massachusetts, and Rhode Island.

HB376/SB208 High Performance Building Act – requires high-energy efficiency standards for new buildings and renovations of old buildings paid for by State funds.

HB375/SB209 Renewable Portfolio Standard Percentage Requirements – doubles the utilities renewable energy standard to 20% by 2022. Utilities will be required to generate 20% of their energy from renewable resources.

(Continued on page 3)



Volunteer to:

- Volunteer to serve on the GB Sierra Club's Political Action Committee and get involved in the 2008 elections. Contact Janet Schollenberger by phone 443-386-5054 or by email jscholle4@jhsph.edu.
- Serve as Cool Cities-Global Warming-Energy Chair, as Conservation Chair, on the Harford County subgroup, on committees or form a new committee: Contact Ron Henry at 410-838-9119 or 443-474-7449 or RonLHenry@msn.com

- Be an outings leader: Contact Jack Wise at 410-256-3963
- Help maintain trails or eradicate invasive plants: Contact Mary Corddry at 443-386-0862, 410-239-4590, or XxDiTz4LyFxX@aol.com

- If you want to get involved with local environmental action but don't know how to get started, contact Chris Yoder, Membership Chair at 410-466-2462 or cncyoder@comcast.net.

Share your enthusiasm for the outdoors with Baltimore City youngsters. We need leaders and co-leaders for outings with youth at the two schools and two community centers with which we partner. Contact Bob Iacovazzi at bicobob@verizon.net. Check out the Baltimore Inner City Outings at www.bico.sierraclub.org/Baltimore

To get more information about any legislation, go to <http://mlis.state.md.us> and type in the bill number, for example HB377 on the main page of the website. SB means senate bill and HB stands for house bill. Most bills have both a House and Senate version. However, there are some exceptions. You may also contact the Department of Legislative Services, [Library and Information Services](#) at 1-410-946-5400 (Baltimore) or contact your representative. To locate your State representative, find your district on <http://mdelect.net/> or call your local state board of elections:

Baltimore County: 410-887-5700
Baltimore City: 396-5550
Harford County: 410-638-3565

GREATER BALTIMORE GROUP SIERRA CLUB CONTACTS

Ron Henry, GB Group Chair
40 E. Jarrettsville Rd
Forest Hill, Maryland 21050-1630
E-mail: RonHenry@msn.com

410-838-9119
443-474-7449

Greater Baltimore Group: www.maryland.sierraclub.org/baltimore

Young Sierrans website:
<http://maryland.sierraclub.org/baltimore/youngsierrans>

Young Sierrans email: youngsierrans@gmail.com

Baltimore Inner City Outings: <http://www.ico.sierraclub.org/baltimore/>

Bob Burchard	410-744-05d10 bicobob@verizon.net	Inner City Outings Liaison Cool Cities – Baltimore County Ex Com Member
Mary C. Corddry	410-239-4590 443-386-0862 cell XdDiTz4LyFxX@aol.com	Newsletter Co-Editor (copy) Recording Secretary Ex Com Member
Sherry Dowdell	410-484-2964 sierrasherry@comcast.net	Newsletter Co-Editor (design)
Doug Gaede	410-357-0007 sierra@gaede.net	Webmaster
Kathy Harget	410-440-9896 hargetk@yahoo.com	Young Sierrans Chair Ex Com Member
Ron Henry	410-838-9119 443-474-7449 RonHenry@msn.com	Group Chair Chapter Chair Chapter Delegate Harford County Representative Energy & Conservation Chair Ex Com Member
Bob Iacovazzi	bicobob3@copper.net	BICO Chair
Katja Kjelgaard	410-455-0408 kkjelgaard@att.net	Interim Treasurer
Patrick McMahon	410-599-5123 Patrick@mcMahon.com	Transportation Chair Ex Com Member
Paul Schoen	410-667-4889 pstech@smart.net	Ex Com Member
Janet Schollenberger	443-386-5054 jscholle4@yahoo.com	Political Chair Ex Com Member
Cliff Terry	410-944-9477 Cliff.Terry@maryland.sierraclub.org	Population Chair
Bette Thomson	410-666-2696 bette888@verizon.net	Outings Gatekeeper
Jack Wise	410-256-3963 Hikingjack@Netzero.net	Outings Chair Ex Com Member
Charles (Chris) Yoder	410-466-2462 cnyoder@comcast.net	Membership Chair Ex Com Member - NEW Chapter Delegate (Alt)

FROM THE CHAIR – April 2008

Hello All! Well, we made it through another action-filled Maryland General Assembly Session from mid-January through April 7, 2008. We made gains in several energy efficiency bills and improved critical areas legislation. Although we did not get our Global Warming Solutions Act passed this year, we laid a most significant infrastructure through our summer-fall 2007 climate action campaign that served extremely well during the legislative session. We almost made it! We will next year!!

In addition, significant strides were made in major grass roots organizing that produced a groundswell of public participation, particularly in Montgomery, Prince George's, Howard, and Baltimore counties with respect to opposition to the completely contraindicated ICC. Three significant ICC bills were introduced, but did not make it out of the House and Senate committees. We got a late start on the ICC grass roots and legislative campaigns, but we made significant progress in educating many Senators and Delegates on the many severe environmental and fiscal issues associated with the ICC. This will provide greater legislative opportunity for the next session. Until then, we will focus on increasing grass roots organizing to increase public participation and to launch a concerted, effective ICC opposition campaign in the 2009 session.

THIS WAS THE IMPORTANT LEGISLATIVE YEAR! My thanks to all who participated in enabling the legislative successes made in 2008. We are now strongly moving environmentally in the right direction! That should make us all feel good!

LNG is now in the final formal permitting process. The AES corporation is submitting the final required documents to FERC for its review. I will re-review those (there are no expected significant changes). Our original opposition document will remain as part of the input into FERC's decision-making process. The Federal Appeals Court Case appealed by AES has been heard and the opinions are being written at this time, so that decision is not known yet.



Photo by Sherry Dowdell

BRAC continues as a major issue in the GBSC arena and is still in a high state of flux. The true impacts are still in the making and are being closely followed by both GBSC and Friends of Harford. The Harford County P&Z Advisory Group is close to being finished with its re-write. The plan will be available for review by the County Council, County Executive, and public during this next quarter.

Now, it's time for Ron to say goodbye as GBSC Chair! I accepted nomination and was voted in as the Maryland Chapter Chair during the January 2008 Chapter EXCOM. Chris Yoder, a GBSC EXCOM member who is also very active in the MD Chapter, has agreed to take GBSC Chair. The formal vote will be taken as the first item of business during the July 17, 2008 GBSC EXCOM meeting. During the interim, Chris will be transitioning into the Group Chair role.

Chris – thanks for stepping up to the plate. And GBSC EXCOM and GBSC members – Thanks for all of your support! BTW, I'll be at Chapter and you can still take me to task at any time!

Cheers,
Ron

Upcoming Greater Baltimore Group Meetings



Happy Hour Social

Members and non-members are invited to meet on **Fri. June 20**, 6 – 8 PM for socialization, happy hour, and dinner at the Charred Rib in the Ridgely Shopping Center in Lutherville near York Road. Walking distance to the Lutherville light rail station. For details, contact Paul at 410-667-4889 or pstech@smart.net.

Executive Committee Public Meeting

Sierra Club members and non-members are invited to attend the next quarterly public meeting of the Greater Baltimore Group's Executive Committee. The meeting is scheduled for **Thursday, July 17, 7:30 – 9:30 p.m.** at the Maryland Presbyterian Church near Towson. Come to participate in the discussions and planning.

Directions to the Maryland Presbyterian Church: Take the Baltimore Beltway (695) to Exit 28 (Providence Road). Take Providence Road north. The church building is on your right just outside the Beltway. Parking lots are in front and at the side of the building.

Outings Planning Meeting

New and prospective outings leaders are welcome to attend the next quarterly meeting of the Greater Baltimore Group's Outings Committee on **Thursday, June 26**. Come plan new outings and meet other outings leaders. If you're interested in leading outings and are curious about what is involved, come and talk with the outings leaders. The meeting will be held at the Panera Bread restaurant in Timonium, beginning with **dinner and socialization at 6:30 p.m.** in a quiet corner **and a meeting to follow at 7:00**. From I-83 north, take exit 16 Timonium Rd. east, turn left on York Rd., and turn right at the next light for the Timonium Center across from the State Fairgrounds. The restaurant is in the right rear area of the parking lot beside Office Depot. For more information, call Bette at 410-666-2696.

(Continued from page 1)

Water Quality

HB1253/SB844 Maryland's Critical Area Act (CAA) – strengthens the enforcement of building restrictions on land that is within 1000 feet of the Chesapeake Bay's tidal waters. This legislation provides the Critical Area Commission with the tools it needs to limit development in these natural buffer areas to prevent sediment and contaminated runoff.

Land Preservation

SB259 Program Open Space – increases the percentage of local Program Open Space funds from 75% to 100% for development of parks.

SB662 Agricultural land transfer tax – addition of a surcharge to preserve farmland by helping farmers purchase land and promote the use of sustainable farm practices

Smart Growth

HB373/SB204 Transit Oriented Development – promotes the creation of compact, walkable communities centered around high quality train systems.

HB366/SB206 Base Realignment Closure – gives local governments tax benefit incentives to build housing for relocated persons in developed areas. This legislation will help preserve undeveloped land.

(Continued on page 4)

*We do not inherit the earth from our ancestors,
we borrow it from our children.
~Native American Proverb*

Join the Young Sierrans

By Kathy Harget, Chair of Young Sierrans

Looking to join a group of young or young at heart individuals who love to spend time outdoors for hikes and other outings, and indoors for lively chatter, good food, and libations? Search no further!

Two and half years after the Baltimore Young Sierrans group was formed, our email list has grown to 145 young adults in the Baltimore area. **We hold a social on every second Thursday of the month and at least one outing monthly.** We have four certified outings leaders – Kathy Harget, Lloyd Allen, Amy Swakhamer, and Sally Hoyt – and we're always looking for new leaders.

Our schedule includes day hikes, camping trips, bike rides, tubing, and more. Approximately 15-20 people show up for each of our events, ranging in age from 21-40. And at most gatherings, we have at least one new person, so don't be afraid to join us solo or with friends!

For more information and details on upcoming outings, please visit our website: <http://maryland.sierraclub.org/baltimore/youngsierrans>. You can also feel free to contact the Chair of this group, Kathy, at youngsierrans@gmail.com, or 410-440-9896. Hope to see you on the trail or at one of our socials!

We Need Your E-mail Addresses!

The Sierra Club is most effective when our members show up at community meetings or hearings or contact their elected officials to voice their opinions and advocate for the environment. We can use e-mail to contact you more than the four times a year this newsletter affords us, in order to let you know about upcoming meetings or important legislation.

If you want to join this environmental hot-mail, give your e-mail address to Cliff Terry at: Cliff.Terry@maryland.sierraclub.org.

If you don't want to rummage around looking for outings schedules before each weekend, get on the **e-mail notification list for upcoming outings**. Send your e-mail address to Alan Penczek at: f-pencze@mail.vjc.edu.



(Continued from page 3)

**Voting Records of Baltimore City,
Baltimore County, and Harford County
State Legislative Representatives
on 10 Important Environmental Bills**

+ vote is favorable for the environment
- vote is unfavorable for the environment
O means did not vote (includes excused and non-excused absences)
* indicates that 100% of the delegates or senators voted in favor of the bill.
% is the percentage of environmentally favorable votes out of the 10 possible votes.

House Delegate	Loc	District	HB 374	HB 368	HB 377 *	HB 376	HB 375	HB 1253	SB 259	SB 662	HB 373	HB 366
Wade Kach 90%	BA	5B	-	+	+	+	+	+	+	+	+	+
Joseph "Sonny" Minnick 80%	BA	6	-	+	+	+	+	-	+	+	+	+
John Olszewski, Jr. 90%	BA	6	+	O	+	+	+	+	+	+	+	+
Michael Weir, Jr. 80%	BA	6	-	+	+	+	+	-	+	+	+	+
Rick Impallaria 50%	BA HA	7	-	-	+	+	-	-	+	+	-	+
J. B. Jennings 60%	BA HA	7	-	-	+	+	-	-	+	+	+	+
Pat McDonough 50%	BA HA	7	-	-	+	+	-	-	+	-	+	+
Joseph Boteler III 40%	BA	8	-	-	+	+	-	-	+	-	-	+
Eric Bromwell 90%	BA	8	O	+	+	+	+	+	+	+	+	+
Todd Schuler 90%	BA	8	+	+	+	+	-	+	+	+	+	+
Emmett Burns, Jr. 70%	BA	10	+	O	+	+	+	+	O	+	-	+
Adrienne Jones 100%	BA	10	+	+	+	+	+	+	+	+	+	+
Shirley Nathan-Pulliam 100%	BA	10	+	+	+	+	+	+	+	+	+	+
Jon Cardin 100%	BA	11	+	+	+	+	+	+	+	+	+	+
Dan Morhaim 100%	BA	11	+	+	+	+	+	+	+	+	+	+
Dana Stein 100%	BA	11	+	+	+	+	+	+	+	+	+	+
Steven Deboy, Sr. 100%	BA	12A	+	+	+	+	+	+	+	+	+	+

House Delegate	Loc	District	HB 374	HB 368	HB 377 *	HB 376	HB 375	HB 1253	SB 259	SB 662	HB 373	HB 366
James Malone, Jr. 100%	BA	12A	+	+	+	+	+	+	+	+	+	+
B. Daniel Riley 100%	HA	34A	+	+	+	+	+	+	+	+	+	+
Mary-Dulany James 100%	HA	34A	+	+	+	+	+	+	+	+	+	+
H. Wayne Norman 70%	HA	35A	-	-	+	+	-	+	+	+	+	+
Donna Stifler 60%	HA	35A	-	-	+	+	-	-	+	+	+	+
Frank Conaway, Jr. 90%	BC	40	+	+	+	+	+	O	+	+	+	+
Barbara Robinson 90%	BC	40	+	+	+	+	+	O	+	+	+	+
Shawn Tarrant 100%	BC	40	+	+	+	+	+	+	+	+	+	+
Jill Carter 80%	BC	41	+	-	+	+	O	+	+	+	+	+
Nathaniel Oaks 100%	BC	41	+	+	+	+	+	+	+	+	+	+
Samuel Rosenberg 90%	BC	41	+	+	+	+	-	+	+	+	+	+
Susan Auman 90%	BA	42	-	+	+	+	+	+	+	+	+	+
William Frank 50%	BA	42	-	-	+	+	O	-	+	-	+	+
Stephen Lafferty 80%	BA	42	+	+	+	+	O	+	-	+	+	+
Curt Anderson 100%	BC	43	+	+	+	+	+	+	+	+	+	+
Ann Marie Doory 100%	BC	43	+	+	+	+	+	+	+	+	+	+
Maggie McIntosh 100%	BC	43	+	+	+	+	+	+	+	+	+	+
Keith Haynes 100%	BC	44	+	+	+	+	+	+	+	+	+	+
Ruth Kirk 100%	BC	44	+	+	+	+	+	+	+	+	+	+
Melvin Stukes 100%	BC	44	+	+	+	+	+	+	+	+	+	+
Talmadge Branch 100%	BC	45	+	+	+	+	+	+	+	+	+	+
Cheryl Glenn 100%	BC	45	+	+	+	+	+	+	+	+	+	+
Hattie Harrison 90%	BC	45	+	+	+	+	+	+	+	+	+	O
Peter Hammen 100%	BC	46	+	+	+	+	+	+	+	+	+	+
Carolyn Krysiak 100%	BC	46	+	+	+	+	+	+	+	+	+	+
Brian Mchale 100%	BC	46	+	+	+	+	+	+	+	+	+	+

Keep the Water at Home

By Mary C. Corddy

In these days of uncertain rainfall, keep the water at home. Harvest the rain. Don't let this precious natural resource run out of your yard, down the street, into a storm drain, and into a stream, perhaps eventually the Chesapeake Bay. You need water and rainwater is relatively clean, so keep it for watering your garden and yard, washing your car, and refilling your well if you have one.

Direct the rain that falls on your roof so that you can keep and use the runoff. Connect your downspouts to one or more rain barrels, a cistern, or other container to store the water; but cover the container to keep mosquitoes from breeding and to keep out leaves, bird droppings, and other contaminants. Your indoor and outdoor plants will thrive on naturally soft rainwater that is relatively free of minerals, chlorine, fluoride, and other chemicals. Or, direct the runoff from your gutters and downspouts to where you want it or where it may be quickly absorbed, such as to the garden, pond, or vegetated area. You can direct the rainwater to a rain garden of water-loving native plants that absorb water quickly and filter it.

Redesign your buildings and land so that your property holds and absorbs water, rather than directing stormwater runoff from your property as quickly as possible. Limit the impervious surfaces on which water flows off without soaking into the ground—paved or concrete driveways, carports, sidewalks, or patios. You can use a more permeable, absorbent paving surface for your driveway such as gravel, concrete lattice, or bricks. You can use stones, tiles, wood, bricks, or bark mulch for your patio.

Look at the slope of your yard, and use and modify it to keep the water from flowing out of your yard. Use the slope to direct the water away from your house and septic system and towards where it is wanted and needed. Rather than leveling off your yard, use gravity and the natural slopes and depressions to catch the

rainwater from running off and to direct and retain it for your well, garden, pond, bushes, flower beds, trees, and other plantings.

Limit the area that grass comprises of your yard, because water does not soak into grass as well as into other groundcover. Trees, shrubs, and groundcover absorb up to 14 times more rainwater than a grass lawn, and they do not require fertilizer. Also, grass is high maintenance, requiring mowing, reseeding, fertilizing, and watering. Limit the use of chemical fertilizers and pesticides in your yard that may contaminate the soil and underground water; harm songbirds, bees, and butterflies; and run off to contaminate streams. Re-sod or reseed bare patches of your lawn to prevent erosion.

Break up your yard to use it for multiple purposes—a vegetable and herb garden for your food; flower gardens and a pond to your enjoyment and for the use of birds, bees, butterflies, frogs, etc.; fruit trees and berry bushes; groundcover that soaks up water and does not need maintenance; and bushes and trees to shelter and shade your home and as homes for birds and other creatures.

Limit the pollutants on your property that can get into the rainwater that is either kept on your property or runs off into a storm drain or stream. Do not over-fertilize your grass or plants, so that the excess amounts are washed away. Only use natural, biodegradable pesticides. Keep engine oil off your driveway. Limit your use of deicing materials on your driveway and sidewalk.

If a stream runs through your property, allow thick vegetation for a buffer strip to grow along the waterway, to slow runoff, filter pollutants, and prevent erosion. Keep the area clear of invasive plants and vines such as Japanese Stilt Grass and wild hon-



ey-suckle, which crowd out the native grasses and plants and strangle the trees.

The Baltimore area's watershed associations offer workshops about rain barrels and water gardens and have water barrels for construction and sale at various events.

- The Gunpowder Valley Conservancy is planning a Rain Garden Workshop for this fall, and has Rain Barrel Workshops through the year. Check out its website at www.gunpowderfalls.org.
- The Herring Run Watershed Association and the Jones Falls Watershed Association also have workshops for constructing rain barrels and have them for sale at various events. Check out their websites at www.herringrun.org and www.jonesfalls.org.

Rain barrels not only save on your water bill by catching and storing rainwater for your use, but they help to reduce stormwater runoff, one of the biggest sources of pollution to our streams and the Chesapeake Bay. According to information on the website <http://rainbarrelguide.com/>, for every inch of rain that falls on a catchment area of 1,000 square feet, you can collect approximately 600 gallons of rainwater.

Rain barrels are made from 50 to 80 gallon, recycled food-grade containers, which can withstand the water pressure and temperature changes for a long time. A hole is cut in the top of the barrel, which is then hooked up

to a gutter downspout. A screen is placed over the opening to keep out the mosquitoes, leaves, and other contaminants. Another hole is cut in the side of the barrel for a spigot. A hose may be attached. Several barrels may be connected with pvc pipes or hoses. A small pump in a barrel may be used to pump out the water to your garden or other site.

According to a fact sheet on "Stormwater Conservation in Your Backyard," issued by the Maryland Department of the Environment (MDE), "nonpoint source pollution...[is] one of the major contributors to the degradation of quality in Maryland's waterways. Stormwater management practices help control nonpoint source pollution through the use of nonstructural and/or structural techniques to intercept runoff from developed areas, filter and treat this runoff, and then discharge it at a controlled rate. The overriding factor that governs the quantity of stormwater runoff is the amount of impervious surfaces located on our property (e.g., driveways, rooftops, sidewalks, etc.). Stormwater quality, however, is governed by the accumulation of pollutants on the entire surface area, regardless whether it is grassed or paved. As the use of chemicals around the home such as fertilizers, pesticides, engine oils, deicing materials, and similar products increases, the more degraded the stormwater runoff from your property will be. While the effect of one property on the quality and quantity of stormwater runoff may seem insignificant, the cumulative impact from hundreds of thousands of yards across the State continues to be destructive to our water quality."

For more information about nonpoint source pollution and stormwater management, you may visit the MDE website at www.mde.state.md.us or contact its Water Management Administration at 410-537-3543. For information about tree planting, contact the Maryland Department of Natural Resources at 1-800-342-2507 or visit their website at www.agnr.umb/users/hgil/.

HEAR YE! HEAR YE! State Tax Break Increases for Renewables!

Legislation that you can take advantage of beginning July 1st is the newly expanded grant program that funds household installation of renewable energy supplies, such as solar power for hot water. Don't forget that there are also Federal tax incentives available through December 31st for solar and fuel cell tax credits and some extra local county incentives for Harford County residents.

For more information about State and local tax incentives contact:

The Maryland Energy Administration

Phone: 410.260.7655

Email: meainfo@energy.state.md.us

Web Site: <http://www.energy.state.md.us> (Note that the website has not been updated with the new legislation, so it is best to email or call.)

For Federal tax incentives contact:

Public Information - IRS

Internal Revenue Service

Phone: (800) 829-1040

Web site: <http://www.irs.gov>

Baltimore City Sustainability Master Plan

As an outgrowth from Baltimore City Councilman Jim Kraft's push for an Office of Sustainability and Mayor Sheila Dixon's goal of creating a "cleaner, greener, healthier, and safer" Baltimore, the City has established a new Commission on Sustainability. The Commission's first task is to spend the remainder of 2008 developing a Sustainability Master Plan for the City. Patrick McMahon, Transportation Chair of the Greater Baltimore Group of the Sierra Club, was named as one of 17 citizen members of the Commission and will chair the Transportation Committee.

Public involvement in the Sustainability Master Plan will start with a large public meeting, tentatively scheduled for Tuesday, May 27th from 5:30 p.m. to 7:30 p.m. At that meeting the public will be asked to provide input and join committees to focus the plan's following six topic areas:

- Air & Energy
- Water
- Waste
- Green Infrastructure
- Built Environment
- Transportation

The committees focusing on each of these topics will meet regularly in June and July. Then, the Commission will unveil its findings and recommendations in September, present the draft plan in October, and help get the plan's approval by the Planning Commission, City Council, and Mayor.

This is a tremendous opportunity to help set the City's short and long-term environmental goals and truly help change City policy. Sierra Club members (both living in the City and those who work or visit the City) are encouraged to get involved by attending the May 27th meeting and/or by contacting either Patrick McMahon at BmoreSustainableTransportation@gmail.com or Sarah Zaleski at sarah.zaleski@baltimorecity.gov.

Meeting times and dates for the topic committees haven't been set yet. Look forward to more information posted at: <http://www.cleanergreenerbaltimore.org/>. For more information about the Sustainability Commission and Master Plan go to: http://www.cleanergreenerbaltimore.org/files/sustainability_program.pdf.

Baltimore Goes Green

There are many opportunities for "green" networking and volunteer activities in the Baltimore area.

- Join the Greater Baltimore & Nature Collaborative at GBCAN.CollectiveX.com. The collaborative is part of the "Leave No Child Inside" movement. It plans events to help get youth connected to nature in schools, neighborhood gardens, and parks.
- Join the GreenerBaltimore list-serve of the Baltimore City Department of Recreation and Parks, to be notified of volunteer service projects in Baltimore City parks. Visit the [greenerbaltimore](http://greenerbaltimore.org) web site, or contact them at green@baltimorecity.gov or 410-396-7900.
- The Parks & People Foundation has a Community Greening Stewardship Program. Visit their website for information about upcoming events or contact info@parksandpeople.org or 410-448-5663.



- Participate in the Baltimore Green Forum, a monthly environmental and discussion forum held on the last Sunday of each month. It is open to the public free of charge. Co-sponsors include Simplicity Matters Earth Institute, Green City Baltimore, Hooked on Nature, Network of Spiritual Progressives of MD, Baltimore Jewish Environmental Network, Baltimore Climate Action Network, and the MD League of Conservation Voters Education Fund. For more information and a schedule of events, contact baltimoregreenforum@gmail.com or 410-965-7740.

- The Chesapeake Sustainable Business Alliance was formed in 2005 to educate the public about the importance of supporting the local economy by buying and selling locally. Its membership of 217 Baltimore businesses, residents, and community leaders encourages businesses and consumers to reduce their environmental footprint by being environmentally sustainable and socially responsible. It is a chapter of BALLE, the national Business Alliance for Local Living Economies (see www.livingeconomies.org). It organized the Buy Local Campaign in Baltimore (www.buylocalbaltimore.org), is initiating a Buy Fresh, Buy Local effort (www.buyfreshbuylocalcr.org), and incubated the Baltimore Biodiesel Cooperative (www.baltimorebiodiesel.org). They host Green Gathering Happy Hours and a forum for the Circle of Green Entrepreneurs with varied speakers, networking, and information-sharing. For more information about the Alliance, contact its Executive Director, Keith Losoya, at keith@csballiance.org.
- The Baltimore Climate Action Network was formed to fight global warming. Check out www.baltimoreclimate.org.

Transportation Updates

By Patrick McMahon, GB Sierra Club
Transportation Chair

Baltimore City Bicycle Master Plan Implementation

Baltimore City completed its Bicycle Master Plan in 2006. The first sections are being implemented in north-central Baltimore neighborhoods as part of the Collegetown Bicycle Network. 33rd Street is among the first streets to receive two innovative new treatments.

"Sharrow" and "Floating" bike lanes are being painted on City streets. The "Sharrow" is intended for roads not wide enough or appropriate for a designated bicycle lane. It indicates the appropriate location for a cyclist and reminds drivers that this road is intended for cyclist usage. The "Floating Bike Lane" is an innovative attempt to designate a bicycle lane on streets where parking is sometimes restricted. Because of the shifting parking, the bicycle lane also needs to shift, sometimes next to the curb and other times adjacent to on-street parking. If it isn't clear how to use these treatments as a cyclist or driver, contact Nate Evans, the new City Bicycle/Pedestrian Planner, at nate.evans@baltimorecity.gov or Patrick McMahon at BmoreSustainableTransportation@gmail.com.

It's important to remember that bicyclists are still allowed on all City streets (not highways), and that these treatments are designed to help less experienced cyclists feel comfortable and remind them of the appropriate portion of the road to ride in, and to help drivers remember to share the right of way.

The steps to implement the Bike Master Plan are important. Public awareness needs to be more widespread. The Plan needs to be part of a broader educational program to teach drivers and cyclists about their responsibilities and how to use the new facilities. Setting up this type of fully integrated bicycle program and prioritizing its funding could be one outcome of the Sustainability Master Plan now being developed.



Bike To Work Day (Friday, May 16) and Clean Commuting Month (All May)

Morning rallies will be held from 7:00 a.m. to 8:30 a.m. at five different locations in the Baltimore region on May 16th to support, encourage, and celebrate individuals who ride their bikes to work.

- Anne Arundel Co/Annapolis - City Dock, Annapolis
- Baltimore City - War Memorial Plaza at City Hall (100 N. Holliday St.)
- Baltimore County - Courthouse Square (400 Washington Ave., Towson)
- Harford County - Government Center (220 S. Main St., Bel Air)
- Howard County - The Mall in Columbia by Sears Service Center (10300 Little Patuxent Parkway, Columbia)

Satellite rallies will also be held in Carroll County (Westminster) and Anne Arundel County (Northrop Grumman).

Each location will be giving out prizes, have food, and offer lots of information about the benefits of cycling and how to encourage your community to better support cycling. For more information go to: <http://www.baltometro.org/content/view/258/230>.

Overall, May is Clean Commuting Month, when individuals are encouraged to reduce their environmental impacts and improve their health by bicycling, walking, carpooling, or taking transit to work, at least for a few days. For more information about Clean Commuting Month, go to: <http://www.baltometro.org/content/view/982/574/>.

Transit Updates

Red Line

The Red Line, a regional transit line intended to connect Security Square on the west side and Bayview Hospital on the east side, is still moving forward. A major opportunity to find out about the project and link it to transit planning for the entire region is coming at Mayor Dixon's Red Line Summit from 9:00 a.m. to 1:00 p.m. on May 10th at the Baltimore Convention Center. The Mayor and her Cabinet will be present to discuss the opportunities of the Red Line, and transit in general, to generate jobs, preserve the environment, minimize congestion, and foster community revitalization.

The Red Line project still faces significant challenges, including a diminishing amount of Federal funding for transit. There is the paradox of creating a project that can serve both long-distance trips and travel on relatively small streets through dense urban neighborhoods. Also, the population and political leadership both are skeptical about the ability to create suc-

Upcoming Bicycling Events

Over the summer there are a number of events that provide an opportunity to get some exercise, have a good time with friends and neighbors, and get riding your bike. One of the best is **Tour Dem Parks, Hon** on **June 8**, a bike ride starting in **Carroll Park** with 14, 20, 30, and 60 mile routes that touch many of the City's parks. <http://www.tourdemparks.org/>

Another upcoming event is the **10th Annual Bike Jam**, held **May 24** in **Patterson Park**. The event includes professional and recreational bike races, a bike expo, and live music. <http://www.bikejam.org/>

On **May 21** bicyclists around the country will hold **Ride of Silence**, an annual event to commemorate bicyclists that have been killed or injured while riding on public roadways. <http://www.rideofsilence.org/>

cessful transit in the Baltimore region and are unwilling to make some of the changes necessary to make it possible.

For more information about the summit, go to <http://www.mayorsredlinesummit.com/>. For more general information about Red Line, go to <http://www.baltimoreredline.com/>.

Charles Street Trolley

For roughly the past six months three working groups have been meeting to clarify the details of the design, ridership, and financing of a streetcar between the Inner Harbor and Charles Village. The Trolley would link neighborhoods, new development, universities (like JHU, UB, and MICA), museums such as the BMA and Walters, and other tourist attractions. By the publication of this newsletter, the initial findings of these working groups should be available on the project Website at <http://www.charlesstreet.org/trolley/>. Go to the site to find out the status of the project and the date, time, and location for two public meetings in May to discuss the project's next steps.

Key Transportation Meeting Dates, Events, & Project Websites

May 10 – Mayor's Red Line Summit (Baltimore Convention Center) <http://www.mayorsredlinesummit.com/>
May 16 – Bike To Work Day <http://www.baltometro.org/content/view/258/230>
May 21 – Ride of Silence <http://www.rideofsilence.org/>
May 24 – 10th Annual Bike Jam <http://www.bikejam.org/>
May 27 – Sustainability Master Plan Kick-Off Meeting <http://www.cleanergreenerbaltimore.org/>
June 8 – Tour Dem Parks, Hon <http://www.tourdemparks.org/>
Charles Street Trolley Project Website - <http://www.charlesstreet.org/trolley/>
MTA Red Line Website - <http://www.baltimoreredline.com/>

UPDATES

By Ron Henry, GBSC Chair

HARFORD COUNTY

As the GBSC Chair, I have continued to serve as liaison to the Friends of Harford (FOH), a Harford County non-partisan conservation group. One FOH member has been an intimate member of the Harford Planning & Zoning (P & Z) Code Update workgroup that is nearly done with its 18-month effort. It has been a contentious effort because the 23-member panel is largely composed of business/developer/government representatives, with two community association and two environmental/conservation group representatives. Not surprisingly, the P & Z Draft Code has some good parts and some "no good" parts. Essentially, three draft codes are competing for attention: the less flawed P&Z Draft Code, the revised draft Zoning Code Update (ZCU) (aka, Developers Zoning Code), and the FOH recommended Code. At this point, the plan is for the County Council and the people of Harford County to be presented with the ZDU (Developers Code) to enact or change. There will be a limited time for public review and comment and for the County Council to make amendments before the Developers Code is to be enacted as legislation. FOH's task is made very difficult since it must correct the deficiencies in both the Developers Code and the flawed P&Z Draft Code.

FOH has proposed a revised process for the County to present the P&Z Draft Code for public review and comment prior to any subsequent legislative enactment. This would remove the bias of the FOH Code and the bias of the Developers (ZDU) Code. Otherwise, FOH will have to prepare a massive number of amendments against the Developers Code, to correct both it and the flawed P&Z Draft Code, including parts of the draft code not reviewed by the workgroup. Although the County's intent was good when it established a P & Z Code Update workgroup, the result was not. The P & Z Code Update workgroup moved away from Smart Growth principles and environmental stewardship!

A public review period will be held from **Wednesday, April 16 to Monday, May 19, 2008**. To post a comment go to http://www.baltometro.org/bboard/09-12TIP_FirstDraft/?numPosts= .

Once a project has made it into the TIP, it is virtually assured that the project will be funded and implemented. But it is worth reviewing the list to see what projects are coming up in your region and contacting the Baltimore Regional Transportation Board and your County Executive/Mayor to let them know about projects you support and those you oppose. More useful is getting involved in local meetings to determine your jurisdiction's transportation priorities and proposed projects, as that is where the real decisions are made for most of these projects.

LNG

During this quarter, the AES's appeal to Federal Court is still in review related to its proposal for a liquid natural gas (LNG) terminal, storage tanks, and pipeline. In the meantime, the formal permitting process has been initiated by AES, which requires formal final documents for EIS, Coast Guard Maritime approval, and a myriad of other reviews. All of this must be presented to the Federal Energy Regulatory Commission (FERC) for final review and decision. There will be area hearings on the EIS chaired by FERC and the Corps of Engineers: Monday, May 12, 7:00 pm, Patapsco High School; Wednesday, May 14, 7:00 pm, Brandywine Fire Hall, Brandywine, PA (pipeline); and Thursday, May 15, 7:00 pm, Richlin Ballroom, Edgewood, MD.

The EIS is purportedly available on the FERC website. The Greater Dundalk Area LNG Opposition Group had a pre-EIS meeting on Safety, Security and Protection on April 22. If the AES loses its Federal Court appeal, the process will stop. It is hoped that will happen; however, it is not a given. In any case, the Greater Baltimore and Maryland Chapter Sierra Club's Sparrows Point LNG siting location opposition remains unchanged. I will stay abreast of this issue.

Draft 2009-2012 Transportation Improvement Program

The Baltimore Regional Transportation Board has released a first draft list of projects submitted for the FY 2009-2012 Transportation Improvement Program (TIP). The TIP is a list of transportation priorities and projects that are requesting federal funding over the next 4 years.

New Projects added for FY 2009 include bridge replacements, METRO and Light Rail Fleet overhauls, MARC Maintenance Shop upgrades, and pedestrian improvements. The full list of proposed projects can be viewed in an online database at: http://bmc.baltometro.org/tips_web/. Visitors to the website can review draft projects near their home or in the region. Included with the project descriptions are funding requests and a map showing the location of the project (if appropriate). This database also lists all project information from the past several TIPs.

BRAC

Things remain in a high state-of-flux with respect to specific numbers of personnel who will egress from various locations to here as part of the Base Realignment and Closure (BRAC) process. Regardless, the job slots will be moved to here. Although details are in a state of flux, it appears that the Ft. Monmouth opposition to moving to Aberdeen Proving Ground has been resolved. The Federal government has allocated funding for infrastructure changes in Harford County and movement allocations for Ft. Monmouth. No firm dates have been established for moving, but the last estimate was 2012.

As can be seen in the Harford County Update, BRAC is a big factor in developers' plans. Also, BRAC is paramount with our involvement with local government conservation/environmental/land use issues through zoning code re-writes and legislation.

SPARROWS POINT LNG HEARING DATES

The FEDERAL ENERGY REGULATORY COMMISSION (FERC) will be conducting PUBLIC HEARINGS for the AES Sparrows Point LNG/Mid-Atlantic Pipeline Project DRAFT ENVIRONMENTAL IMPACT STATEMENT (EIS). These HEARINGS are the first step in the last segment of the FERC Process which started in January 2006. FOR ANYONE CONCERNED ABOUT THE AES SPARROWS POINT LNG PROJECT, NOW IS THE TIME FOR US TO ONCE AGAIN STAND TOGETHER AND STATE OUR CASE TO FERC TO DENY THIS PERMIT!! The schedule for the PUBLIC HEARINGS is as follows:

1. DATE: Monday, June 9, 2008
TIME: 7:00 P.M.
PLACE: Patapsco High School Auditorium
8100 Wise Avenue
Dundalk, MD 21222
2. DATE: Wednesday, June 11, 2008
TIME: 7:00 P.M.
PLACE: Brandywine Fire Hall
2096 Bondsville Rd.
Downingtown, PA 19335
3. DATE: Thursday, June 12, 2008
TIME: 7:00 P.M.
PLACE: Richland Ball Room
1700 Van Bibber Road
Edgewood, MD 21040

Cromwell Valley Park – A Beloved Local Park

By Mary C. Corddy

Cromwell Valley Park is the neighborhood park where I raised my daughter. She walked the many trails, ran through the meadows, climbed the trees, played in the stream, picnicked on the lawns, visited the draft horses, participated in family camp-outs, cooked marshmallows at campfires, enjoyed outdoor concerts on the lawn, and made scarecrows and bought her pumpkin at the Fall Harvest Festival in October. Now I lead a couple hikes in the park every year, to encourage other neighbors to enjoy this accessible, varied Baltimore County park (check the outings schedule in this newsletter for a child-friendly evening hike on July 9th).

Located in the Towson/Parkville area, the park borders Cromwell Bridge Road, just off the Baltimore Beltway. Minebank Run, a tributary of the Big Gunpowder River, flows through the property. Loch Raven reservoir and the dams and trails in that watershed are nearby.

The park has varied habitats—wooded piedmont hills, stream valleys, the Minebank Run flood plain and riparian buffer, wetlands, open grassy meadows, hedgerows, pasture, orchards, vegetable and flower gardens, and cultivated farm fields. There is a marked and mapped trail system, with links to trails outside the park in the Loch Raven watershed. One trail leads to a natural spring that bubbles out of the ground. There is a small frog pond. Dog owners enjoy walking their dogs in the park, but the dogs must be leashed. Wildlife fills the park. There are deer, foxes, raptors, owls, and songbirds. Bird watchers have regular outings.

The 371-acre Cromwell Valley Park was acquired by the Baltimore County Department of Recreation and Parks beginning in 1993, primarily with the State's Program Open Space funds. Several farms were purchased, including the Good Fellowship Farm (Eck property), Sherwood Farm, and Wil-



low Grove Farm (Merrick property). Negotiations are underway to purchase additional properties for preservation on the park's borders, using Program Open Space funds.

The park is situated in an area once known as "Lime Kiln Bottom." The valley has been settled since the early 1700's and used primarily for farming. There was some iron ore mining, and Cockeysville marble was mined for the production of lime. In the 1870s business partners William Jefferson Shanklin and Thomas R. Jenifer operated lime kilns, which were active until the 1920's and still stand in the park. From the Cockeysville marble, the kilns produced agricultural lime and whitewash for buildings.

The park was closed for a year and reopened in July 2005, to allow the county to restore Minebank Run. A road was built between the Sherwood and Willow Grove farms. Various historic farm homes and buildings on the property were recently restored and stabilized through a \$710,000 project and are used as the park headquarters, for meetings and special events, for the resident farmer, and for tenants. The beautiful Sherwood Farm house with the park headquarters has a large meeting room, a kitchen, and a library. There are also barns, a log cabin, old graveyards, the lime kilns, and fenced fields.

Park rangers and trained volunteers

lead hikes and other outings for school groups and the public—amphibian searches during frog mating season, stream searchers for critters, maple sugaring, star gazing, campfires, and spring and fall family campouts in an upper meadow. There is an educational center for school field trips and special programs for all ages and interests. A summer day camp is offered.

There are many special events in the Park, such as the October Fall Harvest Festival, summer concerts on the lawn at the Sherwood House, a children's theatre presentation, and an Easter Egg Hunt. There are classes, educational programs, and potluck meals.

A trail club maintains the park's many trails, with the help of Boy Scouts and other volunteers. Under design, for construction perhaps in 2010 once approvals are obtained, is a flat trail on the Eck property. The trail will be called "Nature Trail for All." Unlike the existing trails, it will be totally accessible to the disabled and small children in strollers, as well as to anyone who seeks to use it. The intent is to develop a trail that is fun, educational, and capable of provoking thought. It will include educational kiosks to emphasize the park's varied habitats and what to find at different times of the year, above and below ground. Information also will be included about environmental threats to the habitats.

A habitat restoration team eradicates invasive vines and plants in the morning of the 2nd Saturday every month and arranges for plantings of native trees, shrubs, and ground cover. Various schools and community organizations participate in the plantings. Another group of volunteers plants and maintains the gardens. Other volunteers take care of the draft horses and educate on animal husbandry. Students may earn community service hours for participating in these activities.

The park has a management plan that tries to balance the park's varied uses. Besides its recreational uses, the park is part of the "Community Supported Agriculture (CSA)" movement. It has a certified, organic, sustainable farm. Families pay an annual membership fee and help to maintain the vegetable fields, and in return pick up their share of the produce harvested weekly. Call 410-880-2428 for information.

The park has the TALMAR Gardens and Horticultural Center (Therapeutic Alternatives of Maryland), operated in co-operation with the Baltimore County Department of Recreation and Parks. You can come to pick fresh flowers. At a newly built greenhouse on the Eck Property, TALMAR offers year-round horticultural education, recreation activities, vocational training, and therapeutic programs. Individuals with disabilities are taught about gardening and flower arranging. For information about classes and activities, call 410-877-5370 or toll-free 1-866-3talmar, or email infor@talmar.org.

For more information about the park and its activities, contact the Park office at 410-887-2503. Check out the website at www.cromwellvalleypark.org. Get involved with plans for the park. Join the Cromwell Valley Park Council. The Council meets on the 2nd Monday of odd-numbered months.

Area Environmental News and Activities

- On **June 17 at 6:30 PM**, there will be a presentation by the National Wildlife Federation on “Global Warming and the Impact on the Chesapeake Bay.” It will be held at the Marshy Point Nature Center in Chase, Baltimore County.
- Baltimore City completed its master plan for the Middle Branch of the Patapsco River. This may be accessed at <http://baltimorecity.gov/government/planning/plansMapsPublications>.
- Zymetis Inc. was granted \$50,000 “challenge” grant for the State as part of a business “incubator” program. The company plans to combine a Chesapeake Bay bacterium with trash to create ethanol biofuel at a rate of 3.5 million gallons annually. This bacterium produces the enzymes that break down into sugars the cellulose in waste paper and industrial and agricultural waste. These sugars are combined with yeast and fermented to produce ethanol.
- The Lower Susquehanna Heritage Greenway is requesting Federal and State funding to create a 40-mile network of waterside walkways through Harford and Cecil counties, building on existing trails in the Susquehanna River’s area. The trails would create walkable communities, linking the area’s natural, cultural, and historic resources, including 14 museums. There would be fishing piers, boat launches, benches, and educational signs along the route. Exelon, owner of the Conowingo Dam, is helping Cecil County to develop a park along the river and is spending \$2.5 million to build a fishing pier near the dam on the Harford side. A \$2.5 million pier and boat launch opened last year in Perryville in Cecil County (see the Outings List for a kayak outing from there on July 12).

Sierra Club Author and World Cyclist on Book Tour in Baltimore

Sierra Club members typically head for the hills, but Jim Malusa headed in the opposite direction. With plenty of sunscreen and a cold beer swaddled in his sleeping bag, Malusa bicycled alone to the lowest point on six continents, a six-year series of “anti-expeditions” to the “anti-summits.” Malusa’s first trip took him to Lake Eyre in the arid heart of Australia. Next he followed Moses’ route from the valley of the Nile to the Jordanian shore of the Dead Sea, and then raced against winter through Russian farmlands, from Moscow to the Caspian Sea. Later journeys found him pedaling across the Andes to Salina Grande in Argentine Patagonia, and around tiny Djibouti to Lac Assal in the Horn of Africa. He polished off the “pits” by riding from his Tucson home to Death Valley.

At three locations in greater Baltimore, Malusa will read from his new book, *Into Thick Air* (Sierra Club Books), and show slides of the land and people along the way to the world’s great depressions.

- **21 May, Wed., 7 PM – REI**, Timonium, Maryland <http://www.rei.com/stores/62> 63 W Aylesbury Rd, Timonium 410-252-5920
- **22 May, Thurs., 6:30 PM -** Baltimore’s Pratt Library, Govans Branch. 5714 Bellona Avenue 410-396-6098 <http://www.prattlibrary.org/calendar/series.aspx?folder=610>
- **23 May, Fri., 7 PM – Barnes and Noble**, The Powerplant, 601 E. Pratt Street Baltimore, MD 410-385-1709 (<http://storelocator.barnesandnoble.com/storedetail.do?store=2881>)



Wavyleaf Basketgrass Alert

By Marc Imlay, MD Chapter Invasive Plant Chair

Sierra Club volunteers, learn how to identify this fast spreading grass that was first identified in North America in the Patapsco Valley State Park in 1997. So far, the grass has only been documented in Maryland, meaning that if it is eliminated now, the entire continent will be free of yet another scourge to our native flora and fauna. It is stoloniferous, with seeds that stick to clothing more than any other plant we have encountered. Until now, no concentrated effort has been made to manage this mounting crisis. It is likely to destroy 10% of the woods in 1/4 of the U.S. in the next decade, unless we act now.

After you have learned to recognize this grass from a site visit or from the photographs on our web site at <http://maryland.sierraclub.org>, you can look for and report it. Please let us know of your interest in coming to a site visit. Report findings to Marc Imlay marc@anacostiaaws.org 301-699-6204, 301-283-0808, Chair of the Biodiversity and Habitat Stewardship Committee for the Maryland Chapter of the Sierra Club and Kerrie Kyde, Invasive Plant Specialist kkyde@dnr.state.md.us, phone: 410-260-8534. You can reach us toll free in Maryland: 1-877-620-8DNR (8367) TTY users dial 711.

The Maryland Native Plant Society, Sierra Club, and Anacostia Watershed Society can take credit for having this species identified by botanists at Little Paint Branch Park in Beltsville. They recognized that it is non-native and as invasive as Japanese Stiltgrass, which is the most damaging non-native invasive plant in our region. We alerted the Maryland Department of Natural Resources, which found that the initial small patches at Patapsco State Park have expanded to 150 acres of "Astro Turf". If it were not for DNR, AWS, Sierra Club, and MNPS, the entire continent would be at far greater risk from this example of early detection/rapid response.

Local Environmental Activities

For non-Sierra Club invasive plant removal activities, planting of trees and other native species, stream cleanup, and stream monitoring, contact the following organizations for information about training sessions and outings:

- Cromwell Valley Park, call 410-887-2503 Mon–Fri 9-2 or for information about invasive plant removals in the park the **2nd Saturday of each month, 9 am-noon (8-11 am during summer)**. Tools and refreshments are provided. You may also call to volunteer to participate in trail maintenance outings at check cvpark@bcpl.net. Check out the park's varied activities.
- Gunpowder Valley Conservancy, 410-343-3478 or info@gunpowderfalls.org, www.gunpowderfalls.org. Volunteers are needed for tree plantings, Stream Watch, and other activities. Contact Peggy Perry at 410-668-0118 or little-owl@msn.com. As one of the few

In Search of: More Outings and Outings Leaders

Calling all leaders and outdoors enthusiasts. Help enhance the outings offerings for the Greater Baltimore Area with more activities of all types, locations, and difficulty —hiking, trail maintenance, watershed cleanup, invasive plant removal, tree planting, strolling, nature exploration for children, stargazing, canoeing, tubing, kayaking, bicycling, car camping, backpacking, orienteering, cross country skiing, bird watching. If you are interesting in sharing your outdoors pursuits and special places with others, find out how to get started. Talk to an outings leader. Attend the quarterly Outings Planning Meeting on **June 26** (see the Outings List). Participate in an outing. Contact Jack Wise, Outings Chair, at 410-256-3963.



land trusts in Baltimore County, GVC places land, which it obtains through purchase or donation, in perpetual conservation easements for protection and monitoring.

- Herring Run Watershed Association, 410-254-1577, volunteer@herringrun.org. Volunteers are sought to adopt sections of Herring Run to monitor, report, and prevent pollution. A trail through Herring Run Park is maintained, and invasive species are removed.
- Irvine Nature Center, 410-484-2413, www.explorenature.org
- Jones Falls Watershed Association, 410-366-3036, www.jonesfalls.org. Join them for invasive plant removals 9:30 –12 on the 2nd Saturday of each month. Hundreds of native trees are available for planting this fall at schools located in the Jones Falls Watershed. In

In Search of Newsletter Contributors:

The deadline is **July 17th** for submissions to the mid-August Baltimore Sierran newsletter. We are seeking contributions from environmentalists of **all ages** and interests. We need articles, news, ideas, photographs, or poems related to the environment, conservation, or outings in Baltimore City, Baltimore County, or Harford County. Send contributions or ideas to Mary Corddy at 410-239-4590 or 443-386-0862 or XxDiTz4LyFxx@aol.com or 75 Perryfalls Place, Nottingham, MD 21236.

March, 25 volunteers planted 300 native trees in less than 2 hours along the Jones Falls buffer in Meadowood Park. They have a Stream Waders program to monitor local streams for aquatic life, and ask citizens to report sewage leaks to the City by calling 311. Contact Suzanne Greene for more information about activities and volunteer opportunities at sgreene@jonesfalls.org.

- Maryland Native Plant Society, www.mdflora.org
- Patapsco State Park, 410-461-5005 or 1-877-620-8DNR, park-patapsco@dnr.state.md.us, www.dnr.Maryland.gov. Check out the new on-line newsletter for events and volunteer opportunities in the various sections of Patapsco State Park at http://www.dnr.state.md.us/publiclands/spring_summer_2008_tributary_pu_b.pdf.
- Prettyboy Watershed Alliance, <http://www.prettyboywatershed.org/> or email prettyboywatershed@gmail.com. The Alliance sponsors stream cleanups, tree plantings, and trail maintenance.
- Urban Weed Warrior Program, Baltimore City Recreation & Parks, 410-396-0359, weeds@baltimorecity.gov. Get trained as a weed warrior and help to eradicate invasive species in the City's parks.

Wanted – Volunteers to Maintain Local Trails

We are scheduling ongoing trail maintenance to rediscover and maintain the old Prettyboy Trail along the shores of Prettyboy Reservoir. The Prettyboy Watershed Alliance and the Mountain Club of Maryland are collaborating with the GB Sierra Club in this effort. Tools are available. For information about upcoming outings, contact Mary Corddy at 410-239-4590 or 443-386-0862 (cell), or email at XxDiTz4LyFxx@aol.com.

Non-Sierra Club Outings

Check out the websites of the following non-Sierra Club organizations for information about their outings:

- Appalachian Mountain Club, D.C.: <http://www.amc-dc.org/Events/date.htm>
- Baltimore Bike Club: www.baltobikeclub.org
- Baltimore Canoe Club: www.baltimorecanoeclub.org
- Biotrek Naturalists: www.biotrek.org
- Center Hiking Club: www.centerhikingclub.org
- Chesapeake Audubon Society: <http://www.chesapeakeaudubon.org/fldtrips.htm>
- Chesapeake Paddlers Association: <http://www.cpakayaker.com/index.html>
- Hiking in Harford County: web site with links by Peter H. Anderson: <http://www.phanderson.com/harford/>
- Maryland Native Plant Society: <http://www.mdflora.org/events/currentevents.html>
- Maryland Outdoor Club: www.marylandoutdoorclub.org
- Mountain Club of Maryland: www.mcomd.org

Wanted: Weed Warriors for Invasive Plant Removal

If you are interested in outings for invasive plant removal, contact Mary Corddy at 443-386-0862, 410-239-4590, or XxDiTz4LyFxx@aol.com. An invasive removal is scheduled in Leakin Park of Baltimore City on **May 17**. (See the Outings Schedule.)



Photo by Pam Suarez

John Muir, founder of the Sierra Club, said: “If people in general could be got into the woods, even for once, to hear the trees speak for themselves, all difficulties in the way of forest preservation would vanish.”

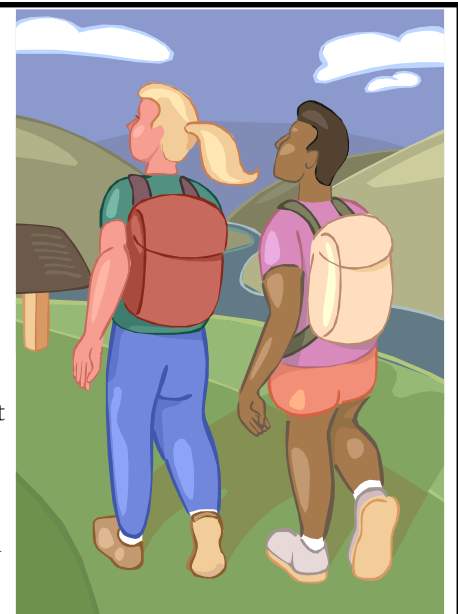
Steps to Becoming an Outings Leader

Experience is not required. You don't need to be a naturalist. Training and mentoring are provided.

- √ To find out how to get started, contact Jack Wise, Outings Chair, at 410-256-3963. Jack has information and resource materials that are useful for new leaders.
- √ Outings leaders are required to be a Sierra Club member and at least 18 years old.
- √ Take the Sierra Club Outings Leader training (Basic OLT 101) or comparable training from a local outings entity. Jack will give you the access codes for the on-line course of the National Sierra Club. Also, check out the Maryland Chapter's Chesapeake newsletter for training given by Dan Soeder, the Chapter's Outings Chair.
- √ Arrange to take a Red Cross basic first aid course or a comparable or higher level course (e.g., wilderness first aid courses offered by Stonehearth Open Learning Opportunities, the Wilderness Safety Council, etc.). **See the Outings List for a first aid course being offered on June 29.**
- √ Purchase the required first aid kit. The Sierra Club will reimburse you for your expenses. Contact Katja Kjelgaard, Group Treasurer, at 410-455-0408 or kkjelgaard@att.net about reimbursement.
- √ Provisionally lead at least one outing, accompanied by an experienced outings leader.
- √ Once you have completed these requirements, inform Jack and contact Bette Thomson, Outings Gatekeeper, at 410-666-2696 or bette888@verizon.net. She will add you to the list of outings leaders.

Participating in Sierra Club Hikes & Other Outings

- Sierra Club outings are open to everyone—members and non-members. Activities are normally “rain or shine” at the leader’s discretion. Check with the leader if the weather appears threatening. **Reservations are not required and there is no charge**, unless noted in the announcement.
- Beginners are welcome. If you haven’t hiked before or not for a long time and aren’t sure about your capabilities, choose an easy outing to start out. If the outing requires experience or good conditioning, this will be stated in the announcement. Call the outing leader if you have questions about the terrain, difficulty, duration, or recommended clothing or equipment.
- Children under 18 years old must be accompanied by a parent, guardian, or other responsible adult. Check out the outing’s details and call the leader ahead of time to find out if the hike is suitable for children, particularly if you want to bring a very young child. If older teenagers want to attend without their parents, they must have the outing leader’s prior consent and have the Minor Medical Treatment Authorization form and a permission slip signed by their parent/guardian.
- Dogs and other pets are not allowed on Sierra Club outings, unless the activity is specifically advertised in the announcement as being “dog friendly.”
- Participants must have the proper clothing, shoes, equipment, and stamina for the event. Bring at least one quart of water with you for every five miles or two hours of hiking. Bring a lunch, snacks, or more. **Always** bring rain gear. In cold weather, dress in layers with synthetics or wool against your skin. Avoid cotton. Wear good hiking boots that support your ankles, which you’ve broken in **before** the hike. Carry a personal first aid kit. Bring any medications that you may need. A hiking stick can come in handy when crossing streams or navigating slippery or rocky slopes.
- Practice low impact hiking. Keep on the trail to avoid trampling things or getting hurt.
- Keep with the group. A “sweep” is usually designated to go last and make sure no one gets lost or runs into trouble.
- Since there are rarely bathroom facilities, every hour or so the outing leader will announce a “separation”. Men and women walk out of sight of each other to answer Nature’s call. Pick a spot at least 200 feet from any water.
- It is encouraged that outings participants carpool between a meeting place and the trailhead. However, the Sierra Club does not have insurance for carpooling arrangements and assumes no liability. Carpooling is strictly a private arrangement among the participants, who assume full responsibility and liability for all risks associated with such travel.
- All participants in Sierra Club outings are required to sign a standard liability waiver before the outing begins. If you want to read the waiver beforehand or get a copy of the Minor Medical Treatment Authorization form, see <http://www.sierraclub.org/outings/chapter/forms/index.asp> or call 415-977-5630.



Outings of the Sierra Club Greater Baltimore Group

May - September 2008

Also, see the outings schedule of the Sierra Club's Howard County Group at:
www.maryland.sierraclub.org/hc

MAY

Sun. May 4 GB – Sing-Along at Perry Point Veterans Hospital

Brighten the lives of patients at the Perry Point Veterans Hospital with a visit and sing-along accompanied by guitar and other instruments you may bring. Many of the people here do not have family and friends to visit them, and they appreciate interaction with other people, which is how we can show our appreciation for their sacrifices for our country. We will follow our visit with a short walk around Havre De Grace (they have a special celebration that weekend), and an early dinner at an inexpensive diner with great food. Meet at church parking lot on Seminary Ave. west of Dulaney Valley Rd at 1:00 PM. Children OK with prior approval. Call Paul at 410-667-4889 or email pstech@smart.net for details.

Wed. May 7 GB – Easy. Gunpowder River Evening Hike

See wildflowers and perhaps herons and beavers. Easy mile or two. Meet at the parking lot at the Gunpowder River and Belair Road north of the Baltimore Beltway at 6:30 PM. For more information, call Jack at 410-256-3963.

Sat. May 17 GB – Moderate. Invasive Plant Removal in Leakin Park.

Help cut invasive vines out of beautiful old trees in Leakin Park in Baltimore City. As well as getting satisfaction from freeing trees that are being choked and strangled, you will be rewarded with excellent exercise. Tools and gloves will be available. Meet at 10 AM at the Carrie Murray Nature Center in Leakin Park, off of Windsor Mill Road in Baltimore City. For more information, contact Mary at 410-239-4590 (home), 443-386-0862 (cell), or email at XxDiTz4LyFxx@aol.com.

Sat. May 17 GB – Moderate. Bicycle Ride on the Gwynns Falls Trail (Older children are welcome).

Explore all or part of the new 15-mile bike trail that runs from near Rt. 70, through a series of parks along the Gwynns Falls to Middle Branch Park at Baltimore City's waterfront. The trail runs along streams, through woods, up and down hills, over bridges, on City streets in back of Ravens stadium, and to wetlands overlooks. Children under 18 must be able to bicycle with this difficulty and be accompanied by a parent or other responsible adult. Meet at 1 PM with your bicycle at Trailhead # 2, Winans Meadow – Leakin Park, 4500 Franklinton Rd off of Cooks Lane/ Security Boulevard in Baltimore City. For more information, contact Mary at 410-239-4590 (home), 443-386-0862 (cell), or email at XxDiTz4LyFxx@aol.com.

Wed. May 21 GB – Easy. Evening Hike at Cylburn Arboretum (Children and dogs are welcome).

2 mile evening stroll along woodland trails and through formal gardens around a mansion house from the 1880s. Children under 18 must be accompanied by a parent or other responsible adult. Dogs must be friendly and leashed. Meet at 6:30 PM in the parking spaces along the side of the road just before the mansion. The park is in Baltimore City on Greenspring Ave. just off the Jones Falls Expressway between Coldspring Ave. and Northern Parkway. For more information, contact Mary at 410-239-4590 (home), 443-386-0862 (cell), or email at XxDiTz4LyFxx@aol.com.

Fri. May 30 - Sun. June 1 GB – Easy. Camping and Blues Festival in Hagerstown

"I got dem Hikin' Blues" outing in Hagerstown, MD. We will leave the Baltimore area about 4:00 PM Friday evening and stay at the [Hagerstown/Antietam KOA Kampground](http://www.hagerstownantietamkoa.com) Friday and Saturday evenings (tent, RV, or Kabin camping). Carpooling is encouraged, and alternate arrangements may be made among participants. We will discuss the history of the canal and the City Park, and consider posi-

tive and negative environmental impacts of commercial campgrounds. Saturday morning is a good opportunity to visit the [Hagerstown factory outlets](http://www.hagerstownfactoryoutlets.com), including LL Bean and Timberland. From about noon to 8 PM we may attend the [Western Maryland Blues Festival](http://www.westernmarylandbluesfestival.com) downtown, which costs about \$25 per person. Sunday morning we will take a 3-5 mile easy hike on the C&O canal near Williamsport, and visit the museum. From about noon until 5:00 PM we may attend the second half of the Blues Festival (no charge) at the beautiful [City Park](http://www.citypark.com). We will do an easy circuit hike of about 2 miles. For more information and reservations, contact Paul (preferably two weeks ahead) at 410-667-4889 or email pstech@smart.net. Children OK with prior approval.

JUNE

Sat. and Sun., June 8 - Aug. 31 GB – Easy. Evening Musical Concerts

Enjoy a variety of [FREE](http://www.freeconcerts.com) musical concerts in a beautiful outdoor setting. Bring folding chairs or blankets and have a picnic under the trees or on the grass. Donations are appreciated at the gate. All concerts start at 6:00 PM and last about 2 hours. We can carpool from the Lutherville light rail station on Ridgely Road at 5:30 PM. Optional pub crawl in Ellicott City after concerts. Contact Paul at 410-667-4889 or email pstech@smart.net. Children OK with prior approval. Website: www.Lurman.com.

Sat. June 7 GB – Moderate. Hemlock Gorge Hike

4 mile hike with two hills along the Gunpowder River through the beautiful Hemlock Gorge. Meet at 11:00 AM at the Middletown Road park-and-ride off I-83 north of the Baltimore Beltway and the Shawan Road exit. We will carpool to the trailhead. For information, call John at 443-739-6439.

Sat. June 14 GB – Easy. Kayaking and Day at the Beach at Hammerman State Park

Kayak where the Gunpowder River and Dundee Creek empty into the Chesapeake Bay. Explore the marshes and shoreline and look for

wildlife in the air, in the water, and along the shores. Meet at 10 AM on the beach at the Hammerman Area of Gunpowder State Park. The park is on Ebenezer Rd. reached from the Whitmarsh Blvd. east exit off I-95. Bring your own or rent a kayak from Ultimate Watersports. It is required to wear a life jacket. There is an admission fee to the park. Stay afterwards or join us later for a picnic lunch and day at this sandy beach, which has picnic tables, a bathhouse, playground, etc. Kayaking is weather-dependent—no threat of thunderstorms and no high waves in the Bay. For more information, contact Mary at 410-239-4590 (home), 443-386-0862 (cell), or email at XxDiTz4LyFxx@aol.com.

Wed. June 18 GB – Easy. Evening Hike at Prettyboy Reservoir (Children and dogs are welcome)

2 miles along the shoreline and through forests around Prettyboy Reservoir along the old Prettyboy Trail, newly re-discovered and maintained by the GB Sierra Club in collaboration with the Prettyboy Watershed Alliance and the Mountain Club of Maryland. Enjoy the pristine water and wildlife along this isolated trail. Look for beavers at their dam. Meet at 6:30 PM at the Mt Carmel Rd. park and ride just west off I-83 north of the Baltimore Beltway. For more information, contact Mary at 410-239-4590 (home), 443-386-0862 (cell), or email at XxDiTz4LyFxx@aol.com.

Fri. June 20 GB – Easy. Happy Hour and Social

Members and non-members are invited to meet 6 – 8 PM for socialization, happy hour, and dinner at the Charred Rib in the Ridgely Shopping Center in Lutherville near York Road. Walking distance to the Lutherville light rail station. For details, contact Paul at 410-667-4889 or pstech@smart.net

(Continued on page 15)

Outings *(Continued from page 14)*

Sat. June 21 GB - Moderate. Great Falls Dinner and Hike

History meets nature at Great Falls section of the C&O Canal in Potosi, MD. We will examine how the canal and locks were constructed and operated. We will take the boardwalk to the Great Falls overlook on Olmsted Island. Length of hike will be 4 miles or less depending on weather and condition of trails. Entrance fee required. There will be a dinner stop in Rockville before the hike. Meet at 3:00 PM at the South West Park & Ride on Rolling Road off I-95 (for map to park & ride see http://www.mtmaryland.com/services/sports/ravens/New_Southwest_Map.cfm) Call Bill for details at 410-574-1453.

Sat. Jun 21 GB – Easy. Eagle's Nest Wine/Cheese Potluck Summer Solstice Pool Party

Visit the historic Eagles Nest estate and learn about its past dating to the 1600s. The party starts at 6:00 PM. Take a short hike to a small stream that empties into Loch Raven Reservoir. Swim in the lovely pool and enjoy dinner with interesting people. Bring a covered dish, grillables, desserts, wine or beer. We will read bits of folklore about the Solstice and have a sing-along featuring my song, "O Solstice Mio". For details, contact **Ted** or **Gordon** at 410-667-6677 or Tedwords@peoplePC.com, or **Paul** at 410-667-4889 or email pstech@smart.net.

Sun. June 22 GB – Moderate. Gunpowder River Hike

5 mile hike with hills along the Gunpowder River. Meet at the Mt. Carmel Road park-and-ride off I-83 north of the Baltimore Beltway and the Shawan Road exit. We will walk to the trailhead. For information, call John at 443-739-6439.



Photo by Sherry Dowdell

Thurs. June 26 GB – Easy. Outings Planning Meeting

New and prospective outings leaders are welcome to attend the next quarterly meeting of the Greater Baltimore Group's Outings Committee. Come plan new outings and meet other outings leaders. If you're interested in leading outings and are curious about what is involved, come and talk with the outings leaders. The meeting will be held at the Panera Bread restaurant in Timonium, beginning with dinner and socialization at 6:30 PM in a quiet corner and the meeting to follow at 7:00. From I-83 north, take exit 16 Timonium Rd. east, turn left on York Rd., and turn right at the next light for the Timonium Center across from the State Fairgrounds. For more information, call Bette at 410-666-2696.

Sat June 29 GB – Easy. First Aid Training and Potluck.

Obtain the first aid training required for outings leaders, and important for all to know. It will be taught by a nurse with over 40 years experience in health care, in her home in Lutherville. Limited to about 8 people. Cost is \$35 (reimbursed by Sierra Club for Outings Leaders). Instruction will be given from 1:00 to 6:00 PM, followed by an optional pot luck dinner. Call in advance for reservations and details: Paul at 410-667-4889 or email pstech@smart.net

JULY

Fri. July 4 GB – Easy. Celebration and Fireworks in Frederick

Celebrate Independence Day at Baker Park in Frederick, MD. Enjoy the sounds of a variety of bands, including well-known classic rock and country entertainers, as well as local musical talent, big band, and patriotic music. Have a picnic in the park, play volleyball, hike along Carroll Creek, and explore historic downtown Frederick. Finally, experience one of the biggest and best fireworks displays on the East Coast. Plus, as appropriate for this day, it's FREE! We will meet at 1:00 PM at the Lutherville light rail station on Ridgely Road. Contact Paul at 410-667-4889 or email pstech@smart.net. Children OK with prior approval. Website: www.cityoffrederick.com/departments/SpecialEvents/july.htm

Sun. July 6 GB - Moderate. Gunpowder River Tube Trip

Bring your tube or rent one at the Monkton Station. Meet at the Monkton Station at 1:00 PM to cool off by lazily tubing down the Gunpowder River, enjoying the river and its banks. For details, call Jack at 410-256-3963.

Wed. July 9 GB – Easy. Cromwell Valley Park Sunset Hike (Children and dogs are welcome)

2 miles through this Baltimore County park that is a working farm with draft horses, woodlands, hilly meadows, streams, limestone kilns, and a brook bubbling out of the ground. Look for wildlife that comes

out at dusk. Meet at 6:30 PM in the parking lot beside the house in the park's Sherwood Farm section on Cromwell Bridge Rd. off the Baltimore Beltway near Towson and Loch Raven Boulevard. Children under 18 must be accompanied by a responsible adult. Stay for dinner at Sander's Corner Restaurant nearby. For details, call Mary at 443-386-0862 cell or 410-239-4590 home, or email XxDiTz4LyFxx@aol.com.

Sat. July 12 GB – Moderate. Kayaking on Susquehanna River

Kayak from a new boat launch at Perryville Community Park in Cecil County, near where Mill Creek empties into the Chesapeake Bay at the mouth of the Susquehanna River. Explore Mill Creek and Furnace Bay, then go out into the Chesapeake Bay and head up the Susquehanna River to check out Garrett Island below Conowingo Dam. Look for eagles and other wildlife in the air, in the water, and along the shores. Meet at 11 AM at the boat launch. Bring your own kayak or canoe. It is required to wear a life jacket. Kayaking is weather-dependent—no threat of thunderstorms and no high waves. Possible dinner stop on the trip home. For directions and more information, contact Mary at 410-239-4590 (home), 443-386-0862 (cell), or email at XxDiTz4LyFxx@aol.com.

Sun. July 20 GB – Easy. Hike and Free Concert with Picnic in Catonsville

Meet at 4:30 PM at Lurman Park parking lot, on Hilltop Road off Bloomsbury Ave. near Catonsville High School. We will take a short 1-2 mile hike around the school, maybe take a couple of laps around the track, and then settle down to enjoy a free Boogie Woogie Blues concert by the renowned Deanna Bogart Band. Bring a picnic potluck dinner to share. Check theater website at www.Lurman.com, or contact Paul at 410-667-4889 or email pstech@smart.net.

(Continued on page 16)

Outings *(Continued from page 15)*

AUGUST

Sun. Aug. 3 GB - Easy/Moderate. Stroll through Warren

3-4 mile stroll to learn about the lost town of Warren and explore some of the remaining ruins of this historic town that was flooded in 1922 with the Loch Raven Reservoir. We may be joined by a local resident and amateur historian who made a video of Warren's history. Meet at the southeast corner of the Cranbrook Shopping Center on Cranbrook Road near Ridgeland, at 3:00 PM. We may have a cookout or share pizza after the hike. Call Paul at 410-667-4889 or email pstech@smart.net.

Sat. Aug. 16 GB – Easy. Full Moon Hayride and Farm Tour

Cost will be \$10 per person. We will meet at 7:00 PM at the church parking lot on Seminary Ave. west off Dulaney Valley Road 1/2 mile north of I-695. Tractor-pulled hayride starts at 7:30 PM at Yoder's Land of Promise Farm in Long Green. We will hopefully see the full moon. After the hayride we will have refreshments of soda, cider, hot dogs, and marshmallows around a bonfire, with guitar music and sing-along. Extra instruments invited! Activity will end about 10:00 PM. For more information and reservations, call Lynn at 443-986-1100 or Paul at 410-667-4889 or email pstech@smart.net. Children OK with prior approval.

Sat. Aug. 23 GB – Moderate. Kayaking at Rocky Point Park

Kayak from this waterfront park to Hart Miller Island, a short paddle across in the Chesapeake Bay. Hart Miller (built from dredge spoil) is a favorite hangout for boaters and has a campground, observation tower, sandy swimming beaches, waterfowl, and floating vendors. Meet at 10 AM at the boat launch in the far end of Rocky Point Park past the beach area. Bring your own kayak. It is required to wear a life jacket. There is an admission fee to the park, which has a sandy beach, grassy shaded area with picnic tables and playground, sailboat rentals, and a marshy area with a fish-

ing pier. The park is reached from Rt. 702 and Back River Neck Rd. from the Baltimore Beltway 695 east. Kayaking is weather-dependent—no threat of thunderstorms and no high waves on the Bay. For details, contact Mary at 410-239-4590 (home), 443-386-0862 (cell), or email at XxDiTz4LyFxx@aol.com

SEPTEMBER

Sat. Sept. 6 GB – Moderate. Stony Run Trail Hike (Older children and dogs are welcome)

5½ miles along the Stony Run stream through Baltimore neighborhoods including Hampton and Roland Park and through Wyman Park. The trail is well-maintained, mostly flat and shaded, with scenery ranging from jungle to manicured parks. Go underneath several bridges decorated with graffiti. See the results of extensive stream restoration by Baltimore City and the planting of native trees by the Jones Falls Watershed Association and other volunteers. Children under 18 must be able to hike this distance and be accompanied by a parent or other responsible adult. Dogs must be friendly. Optional burgers afterwards at Dizzy Izzie's in Remington. Meet at 10 AM and park on either side of Sisson St. beside the ex-Stieff Silver and the Boy Scouts headquarters, or in the parking lot on the left with the Jones Falls Trail sign. From 29th Street just east of the Jones Falls Expressway, turn north onto Keswick Rd. and then take the first left onto Sisson St. For more information, contact Mary at 410-239-4590 (home), 443-386-0862 (cell), or email at XxDiTz4LyFxx@aol.com.

Sat. Sept. 20 GB - Moderate. C&O Canal Hike (Sharpsburg to Shepardstown)

7 mile hike along the C&O Canal from Sharpsburg to Shepardstown and back. We will examine how the canal and locks were constructed and operated. Possible dinner stop after hike. Meet at 9:30 AM at Southwest Park & Ride on Rolling Road off I-95. For details, call Bill at 410-574-1453.



Non-Profit
Organization
U.S. Postage
Paid
Elkton, MD
Permit No. 85

MOVED?

Report your address change to:
(415) 977-5653
Sierra Club Member Services
P.O. Box 52968
Boulder, CO 80328-2968

Baltimore Sierran

**Sierra Club mission: Explore,
enjoy and protect the planet.**

**7338 Baltimore Ave, Suite 101A
College Park, MD 20740**